

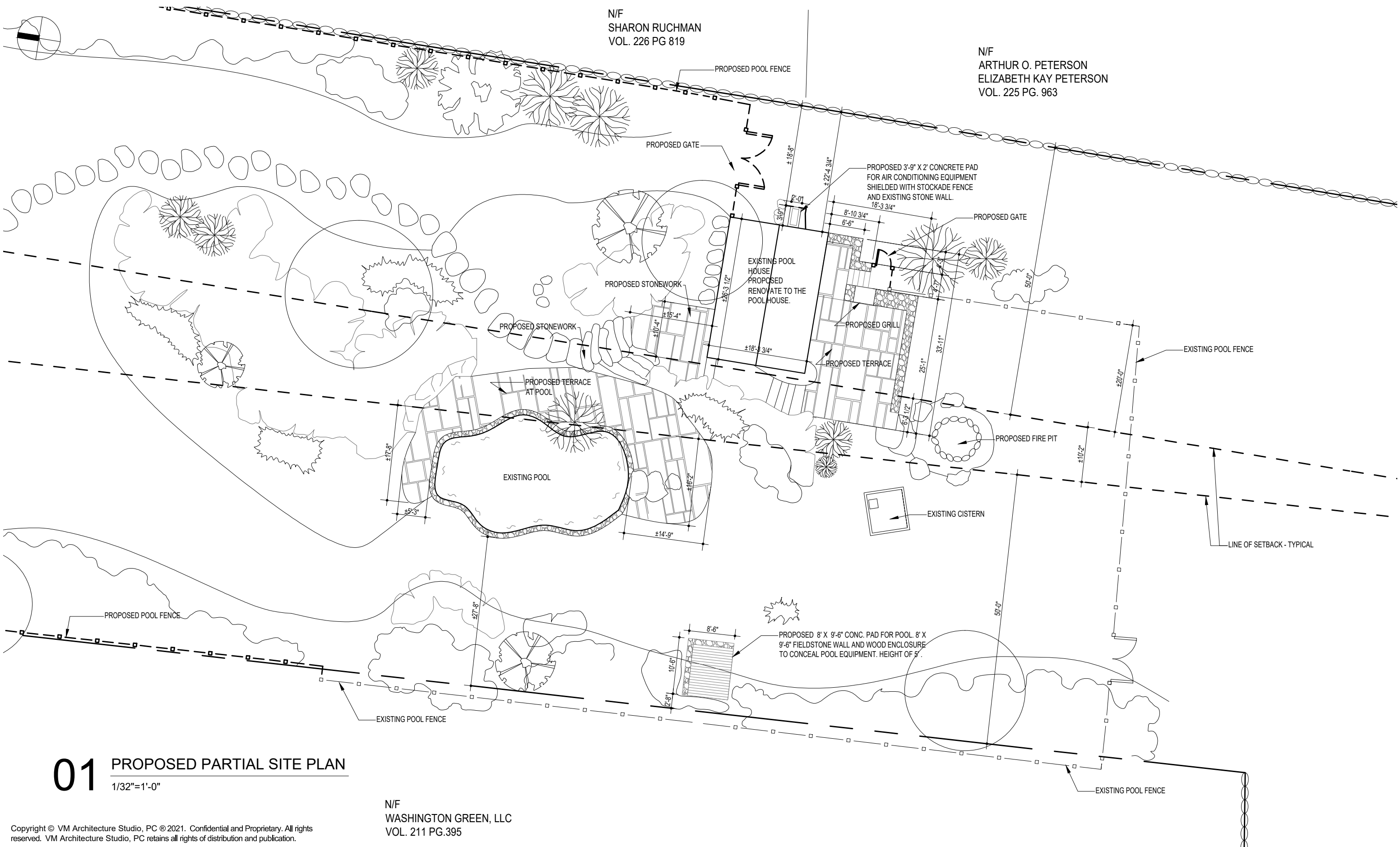
N/F
WASHINGTON GREEN, LLC
VOL. 211 PG.395

Copyright © VM Architecture Studio, PC © 2021. Confidential and Proprietary. All rights reserved. VM Architecture Studio, PC retains all rights of distribution and publication.

VM ARCHITECTURE STUDIO, P.C.
20 West 22nd Street, Suite 1609
New York, New York 10010
(212) 675 2200
www.vmdstudio.com

TITLE:
DIMENSIONED PARTIAL SITE PLAN
DRIVEWAY, GARAGE AND DWELLING

DRAWING: **Z101** SCALE: 1/16"=1'-0" DATE: 06-22-2021



N/F
SHARON RUCHMAN
VOL. 226 PG 819

N/F
ARTHUR O. PETERSON
ELIZABETH KAY PETERSON
VOL. 225 PG. 963

01 PROPOSED PARTIAL SITE PLAN
1/32"=1'-0"

N/F
WASHINGTON GREEN, LLC
VOL. 211 PG.395

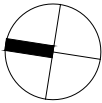
Copyright © VM Architecture Studio, PC © 2021. Confidential and Proprietary. All rights reserved. VM Architecture Studio, PC retains all rights of distribution and publication.



VM ARCHITECTURE STUDIO, P.C.
20 West 22nd Street, Suite 1609
New York, New York 10010
(212) 675 2200
www.vmdstudio.com

THE ROCK GATE CARRIAGE HOUSE
49 FERRY BRIDGE ROAD
WASHINGTON, CONNECTICUT

TITLE:
DIMENSIONED PARTIAL SITE PLAN
POOL & POOL HOUSE



DRAWING: Z102
SCALE: 1/16"=1'-0"
DATE: 06-22-2021