

**Prepared For: Cohen & Wolf, P.C.**

**Point of Contact: Philip C. Pires**

**Prepared by: Acoustical Technologies Inc.  
50 Myrock Avenue  
Waterford, CT 06385-3008**

**Subject: Mayflower Special Permit Application  
116 Woodbury Road  
Washington, CT 06793  
Airborne Acoustic Analysis**

**Author: Carl Cascio**

**Date: February 3, 2022**

**Revision: 2**

## Table of Contents

	Page
Summary	3
Introduction	6
Development of the Acoustic Assessment	6
Analysis	10
Prominent Discrete Tones	14
Conclusions	16
References	17
Appendix	17

## Summary

Acoustical Technologies Inc (“**ATI**”) has reviewed (i) the letter dated November 12, 2021 (the “**BAC Letter**”) from Brooks Acoustic’s Corporation (“**BAC**”) to Mr. Mohit Girdhar - Interim General Manager at Auberge Resorts Collection<sup>2</sup>, (ii) Mitigation Plan White Paper (the “**White Paper**”) prepared for the Mayflower Inn dated November 12, 2021 from Powerstation Events (“**Powerstation**”) <sup>4</sup>, (iii) the application for Special Permit (the “**Special Permit Application**”) from MSFPA2013 (“**Auberge/Mayflower**”) dated November 15, 2021<sup>7</sup>, and, in particular, the statement in the next paragraph from reference 2. ATI has also attended the Washington Zoning Commission Zoom Meeting on January 24, 2022 and ATI has obtained background airborne noise measurements at five homes in the vicinity of the Mayfair Inn & Spa.

BAC in its BAC Letter indicates that its proposed noise mitigation is calculated to result in a 35 dBA noise level at the nearest neighbor: *“Based on this analysis, it is the opinion of BAC that with a reasonable degree of engineering certainty that the establishment of the special use will be in harmony with or compatible with its neighbors and generally consistent with the comprehensive plan. Therefore, the proposed facility will have little or no impact on the surrounding residential neighborhood.”* (See page 12 of the BAC Letter)

ATI disagrees. This document makes a negative acoustic assessment that should assist in denying the Special Permit Application made by Mayflower Inn 2013, LLC in Washington, CT. An acoustic assessment plan was developed and executed to provide airborne acoustic information useful in explaining the potential airborne noise issues associated with music during weddings and other events at the Hospitality Tent. **It is important to state that the airborne noise generated by the events, based upon the proposed BAC and Powerstation designs, will seriously impact the neighbors surrounding the Auberge/Mayflower facility.**

The airborne noise levels produced by the Hospitality Tent operating at the Mayflower site were calculated both with and without the noise mitigation designs proposed by Brooks Acoustics and Powerstation Events. Nearby Residential property locations see the event noise at airborne noise levels as high as 75 dBA with the current (2021) tent configuration. These noise levels are about 20 dB higher than the daytime Residential noise limits in the CT Noise Ordinance<sup>1</sup>. The proposed designs reduce these noise levels by about 10 dB resulting in 65 dBA estimated levels.

Brooks Acoustics<sup>2</sup> proposed noise mitigation that they calculated to result in a 35 dBA noise level at the nearest neighbor. Unfortunately, the noise mitigation proposed by BAC and Powerstation cannot provide 40 dB of mitigation needed to reach 35 dBA airborne noise levels at the nearest neighbors. From the BAC report: *“It is conservatively estimated that these features will reduce the level of sound which leaves the Hospitality Tent by about **25 to 30 dBA.**”*<sup>2</sup>

Ambient background noise measured near the Mayflower In & Spa during the day indicate L90 sound levels that range from 32 to 38 dBA. Night time sound levels adjacent to the Mayflower have been found to be below 30 dBA. The neighbors of the Mayflower Inn & Spa currently experience extremely quiet background airborne noise levels in the absence of the music played last year during events held at the Mayflower Inn’s tent.

Acoustical Technologies Inc.

Our summary findings are as follows:

Brooks Acoustics proposes a music shed that effectively attenuates the sound transmission through the walls of the music shed. All the sound is directed out of the shed in the south easterly direction. Powerstation Events adds speakers inside the tent to effectively smooth out the directed sound leaving the music shed. The result of these combined efforts provides the ability to make a more uniform music environment of approximately 100 dBA at 5 feet when there are 120 people in the tent. This approach defeats the purpose of having a music shed since the music is no longer directed to the south east. The overall noise mitigation is reduced approximately to that provided by the BAC absorber panel design (8 to 10 dB).

Assume the Powerstation design is eliminated and there are no multiple small format loudspeakers in the tent and then just look at the sound directly leaving the music shed. Some of that sound will diffract around the west edge of the shed and head towards the neighbors. This diffraction was calculated and the sound level at the closest neighbor dropped from 75.4 dBA to 65.3 dBA. If we add another 10 dB for the absorber panels on the tent walls the result is about 55 dBA, not the 35 dBA that was predicted by Brooks Acoustics. Because of the diffraction around the west edge, the shed is probably capable of only about a 10 dB improvement over not having a shed. This means that with the proposed BAC mitigation approach only a 20 dB total improvement is possible if the Powerstation speakers are either turned off or eliminated.

The CT Noise Ordinance calls for review of acoustic issues associated with prominent discrete tones. Event music may invoke the 5 dB lower noise limit for discrete tones. The proposed design will also require a noise vestibule to avoid violating the CT noise ordinance when doors are opened and music is playing. A closed building would be a more appropriate event location. The examples of other venues having no adverse acoustic impact presented by the applicant's consultants are misleading. The Saint Clements Castle & Marina is located in an isolated spot on the Connecticut River with no home within 1000 feet. The Barns at Wesleyan Hills is an indoor venue across the street from a large condominium complex in Middletown CT. Neither location is similar to Mayfair's site in a rural residential community of nearby single owner residences.

- For 2021 events at Auberge/Mayflower, nearby residential property locations experienced the event noise at airborne noise levels as high as 75 dBA with the current (2021) tent configuration. BAC/Powerstation proposals only provide about 10 dB reduction in noise levels from 2021 levels, resulting in 65 dBA estimated noise levels for a typical Wedding Event at nearby neighbors. **The 65 dBA airborne noise levels do not comply with the CT Noise Ordinance.**
- **BAC's proposed noise mitigation fails to meet BAC's stated goals:** The noise mitigation proposed cannot provide the 40 dB of mitigation needed to reach the 35 dBA noise level at the nearest neighbor proposed by BAC. Powerstation adds multiple small format loudspeakers inside the Hospitality Tent to effectively smooth out the directed sound leaving the Music Shed. This approach defeats the purpose of having a Music Shed since the music is no longer directed to the south east. The noise mitigation is reduced approximately to that provided by the absorber panels proposed in the BAC Letter. This mitigation is only 8 to 10 dB, not the 40 dB needed to reach 35 dBA.

Acoustical Technologies Inc.

- The results show that the currently planned noise mitigation does not meet the State of Connecticut airborne noise requirements at the closest nearby properties in the R-1 Residential Zone.

- Background levels in the vicinity of the Mayflower Inn & Spa are lower than 35 dBA so noise mitigation of more than 40 dB is needed to avoid impacting the nearby properties.

- Reaching the background level is not sufficient to meet the goal of having no or little impact on the surrounding residential neighborhood. Human hearing is capable of detecting the music as much as 10 dB below the background noise level. An October 2000 document from the NY State Dept of Environmental Conservation, Assessing Mitigating Noise Impacts quantifies the impact of adding noise to a quiet background:

1. under 5 dB, unnoticed or tolerated,
2. 5-10 dB, intrusive,
3. 10-15 dB very noticeable,
4. 15-20 dB objectionable,
5. over 20 dB, very objectionable to intolerable - **this is the situation the Mayflower neighbors faced during most of the weddings last year.**

- ATI's Recommendation: **Deny the Special Permit Application.**

## **Introduction**

Acoustical Technologies Inc. was tasked with an assessment of potential acoustic issues associated with a Mayflower Inn 2013, LLC Special Permit Application<sup>7</sup> requesting permission to hold wedding and other events at the Mayflower site at 116 Woodbury Road in Washington, CT. Responding to a request from Philip Pires acoustical analysis of the airborne noise leaving a tent on the Mayflower property and reaching the adjacent residential properties is to be studied. A survey of the property line airborne noise levels produced by the amplified music from previous and future wedding ceremonies will be made in order to identify any potential airborne noise issues. These airborne noise estimates will be based on estimated tent airborne noise levels supplied by Brooks Acoustics Corporation<sup>2</sup> as well as the proposed acoustic mitigation. This document provides an acoustic assessment to assist in addressing acoustic noise concerns for the special permitting of events for the Mayflower Inn 2013, LLC in Washington, CT.

## **Development of the Acoustic Assessment**

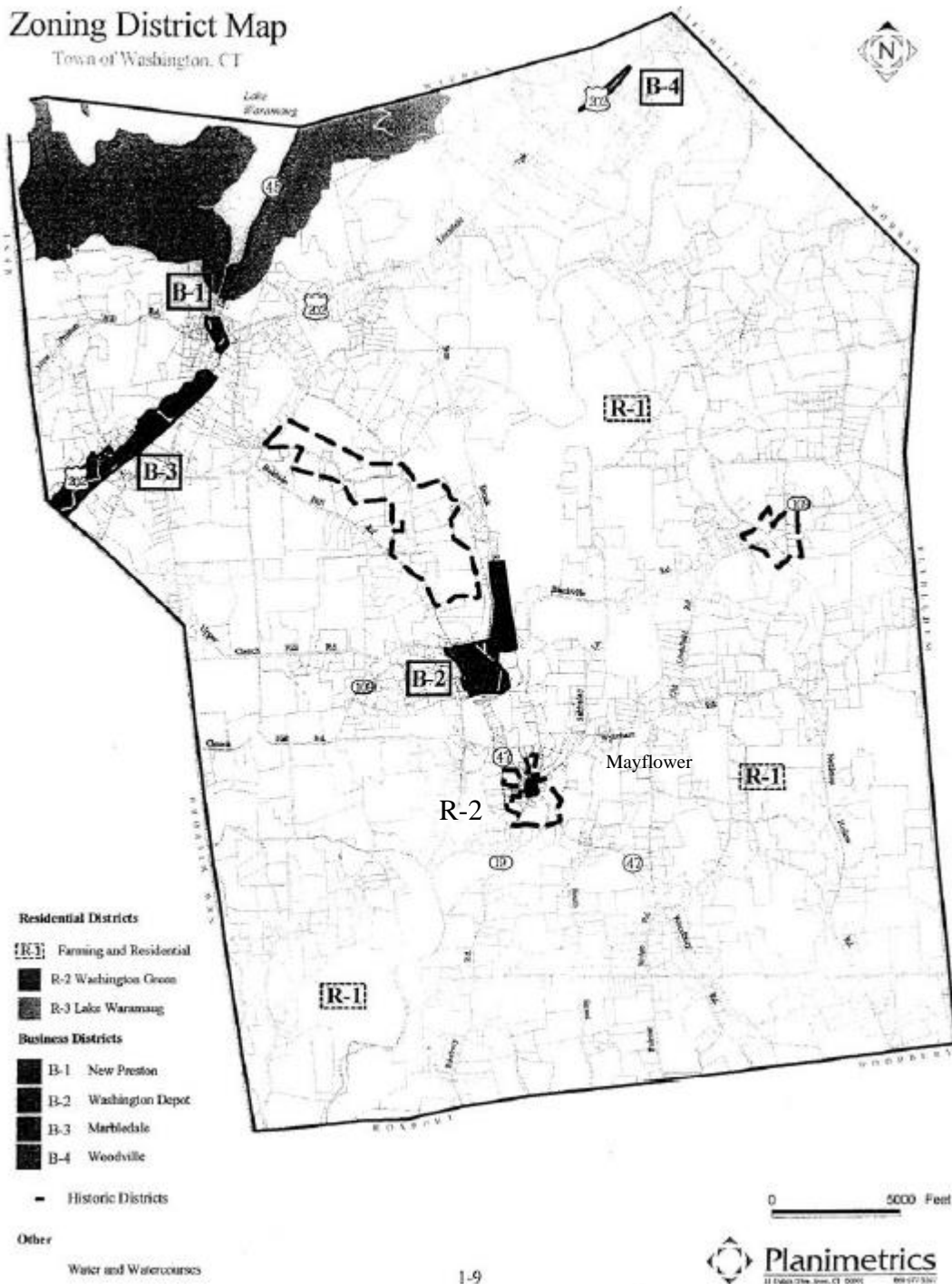
The purpose of this effort is to develop acoustic information useful in understanding the potential airborne noise issues associated with Mayflower Inn 2013, LLC events at the 116 Woodbury Road site. The Mayflower tent site is located in a R-1 Residential zone. The site is adjacent to a R-2 Residential Historic District to the southwest. A B-2 Business zone is about a mile away to the northwest. (The Washington zoning map is given in Figure 1.) It is important to determine whether the Mayflower events' airborne noise will negatively impact the residential neighbors.

The acoustic impact is assessed in the following way. The event operating airborne noise levels were measured during 2021 by a neighbor. Using this data and the source level data from reference 2, the noise levels at nearby property lines will be calculated using the Noise Tools application<sup>3</sup>. The noise calculations are then compared to the allowable noise levels in the State of Connecticut Noise Ordinance. This approach then follows the traditional "What is the airborne noise level at the neighbor's property line?". Is the airborne noise below the allowable airborne noise levels? This estimated data can also be used to estimate noise levels after including the noise mitigation proposed by Brook Acoustics. The effect of measured background noise will also be considered. The acoustic data is then used to evaluate the effectiveness of the noise treatments. Because of the closeness of the tent to the nearest neighbors, noise mitigation is included in the Special Permit Application and will be reviewed to see if it is sufficient to address the neighbor's concerns about the airborne noise.

Table 1 provides the results of the Noise Tools' calculations based on a 100 dBA source level at a distance of 5 feet as given in ref. 2 for a party of 120 people. See the following on page 6<sup>2</sup>. *"For a larger venue such as the Mayflower Inn Hospitality Tent with up to 120 guests, the sound level can increase up to about 100 dBA at 5 feet."*

The hospitality tent is at an elevation of approximately 696 feet. Table 1 includes the property line elevations taken from Google Earth Pro so that the difference in elevations can be included in the Noise Tools Calculations. Location 15 is both calculated and was measured during a wedding event. The homeowner's measurement was about 6 dB higher than the calculation indicating the possibility that levels higher than 100 dBA at 5 feet may occur for some events.

Figure 1. Washington Zoning Map



At the Mayflower site event operating airborne noise calculations were made at the following fifteen nearby locations in the Residential Zone:

Acoustical Technologies Inc.

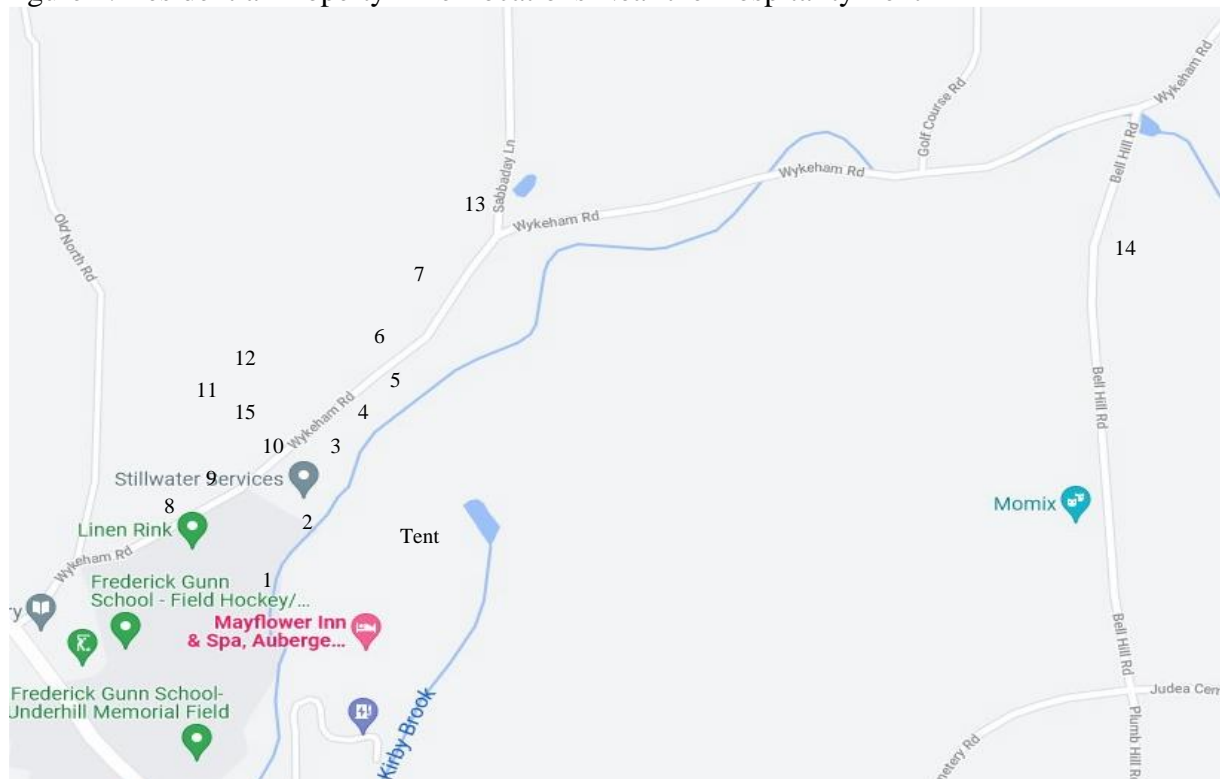
Table 1. 2021 Estimates of Airborne Noise at Nearby Property Lines

	Distance	Elevation	Difference	dBA
1. 21 Wykeham Road	134 meters	653 feet	-13.1 meters	75.5
2. 23 Wykeham Road	135 meters	650 feet	-14 meters	75.4
3. 25 Wykeham Road	177 meters	670 feet	-7.9 meters	73.1
4. 27 Wykeham Road	164 meters	664 feet	-9.8 meters	73.7
5. 29 Wykeham Road	154 meters	658feet	-11.6 meters	74.3
6. 32 Wykeham Road	220 meters	682 feet	-4.3 meters	71.2
7. 42 Wykeham Road	260 meters	673 feet	-7 meters	69.7
8. 2 Old North Road	303 meters	720 feet	7.3 meters	68.3
9. 4 Old North Road	270 meters	701 feet	1.5 meters	70.8
10. 6 Old North Road near property line	213 meters	683 feet	-4 meters	71.5
11. 8 Old North Road	305 meters	693 feet	-0.8 meters	70.1
12. 16 Old North Road	288 meters	753 feet	17.4 meters	68.7
13. 3 Sabbaday Lane	430 meters	698 feet	0.3 meters	67.5
14. 14 Bell Hill Road	890 meters	854 feet	48.2 meters	58.6
15. 6 Old North Road near house	274 meters	734 feet	11.6 meters	69.2

Measurement by homeowner → mid 70's

The Google satellite map in Figure 2 shows the approximate property line locations. Figures 3 and 4 show the Noise Tools Calculation at 23 Wykeham Road and 6 Old North Road. Note that the tent is about 14 meters above 23 Wykeham Road and about 11.6 meters below the 6 Old North Road locations. The elevation difference reduces the noise level by 1 dB(1<sup>st</sup>) or 2 dB(2<sup>nd</sup>).

Figure 2. Residential Property Line Locations Near the Hospitality Tent





Acoustical Technologies Inc.

Figure 3. Noise Tools Prediction at 23 Wykeham Road for 2001 Events (Position 2)

Sound Propagation Level Calculator

[Interactive noise source-to-receiver diagram with barrier calculations](#)

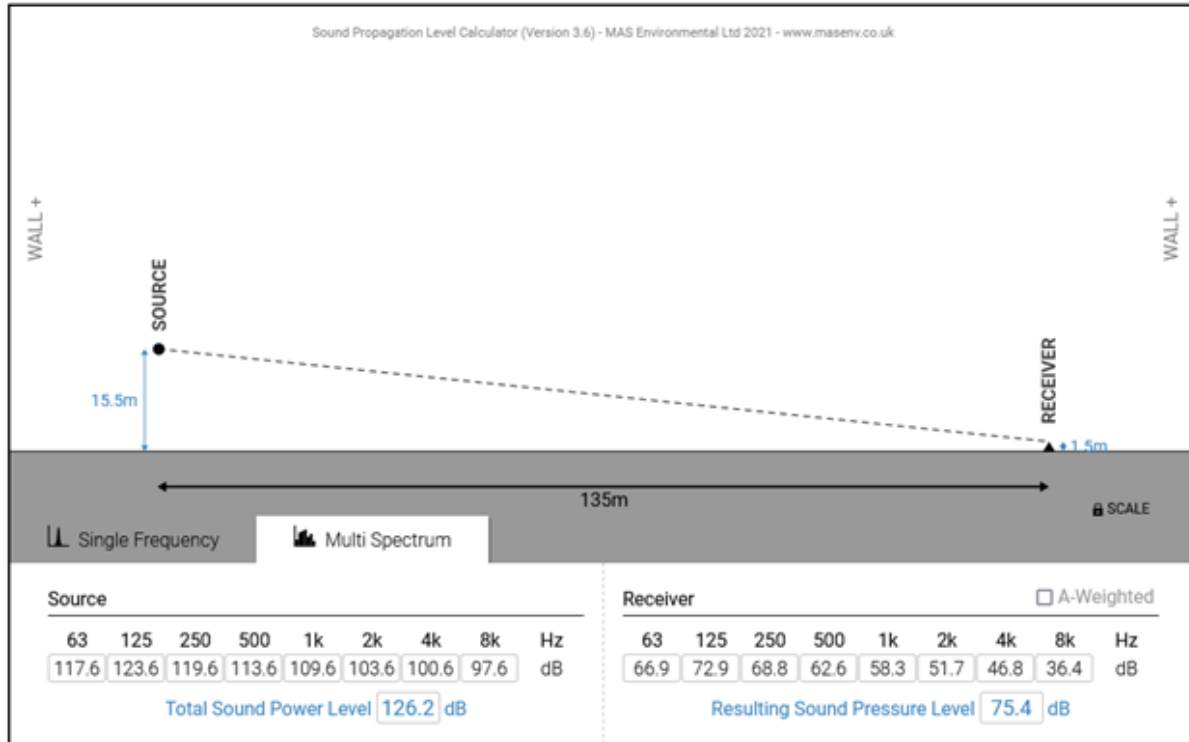
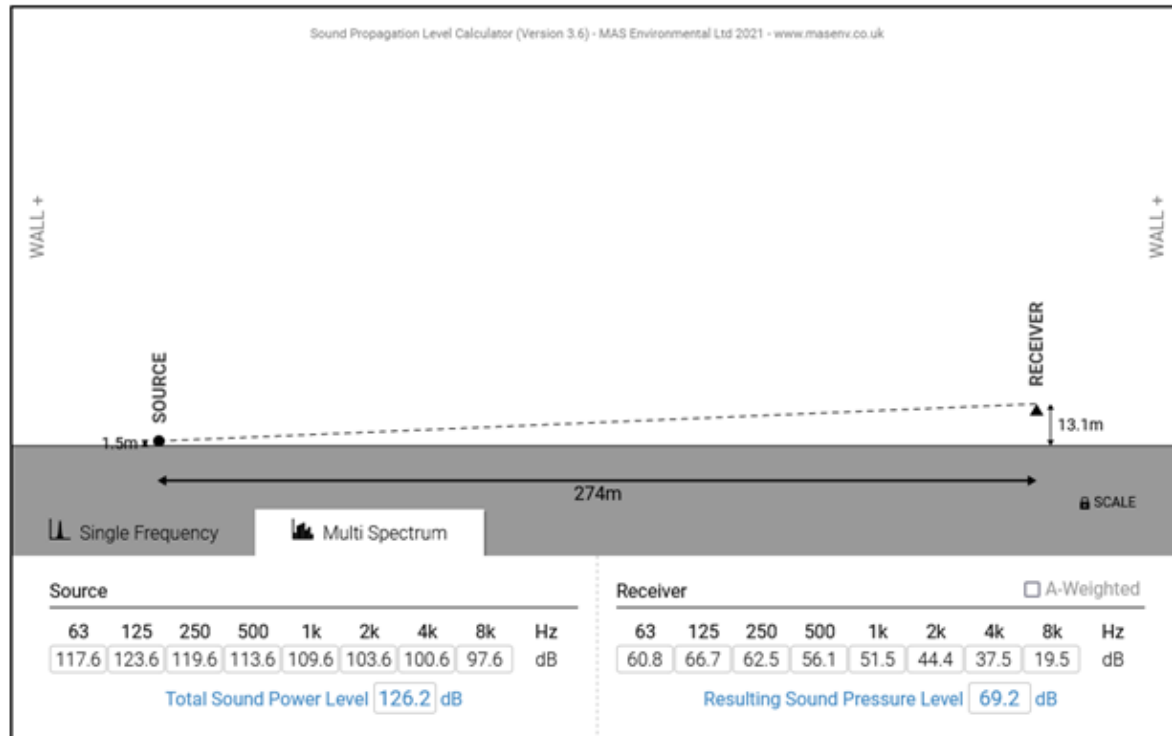


Figure 4. Noise Tools Prediction at 6 Old North Road for 2001 Events (Position 15)

Sound Propagation Level Calculator

[Interactive noise source-to-receiver diagram with barrier calculations](#)



Acoustical Technologies Inc.

Table 2. 2022 Estimates of Airborne Noise at Nearby Property Lines with 4 Mitigation Levels

	2021	2022 – 20 dB	2022 – 25 dB	2022-30 dB	2022-40 dB
1. 21 Wykeham Road	75.5	55.5	50.5	45.5	35.5
2. 23 Wykeham Road	75.4	55.4	50.4	45.4	35.4
3. 25 Wykeham Road	73.1	53.1	48.1	43.1	33.1
4. 27 Wykeham Road	73.7	53.7	48.7	43.7	33.7
5. 29 Wykeham Road	74.3	54.3	49.3	44.3	34.3
6. 32 Wykeham Road	71.2	51.2	46.2	41.2	31.2
7. 42 Wykeham Road	69.7	49.2	44.2	39.2	29.2
8. 2 Old North Road	68.3	48.3	43.3	38.3	28.3
9. 4 Old North Road	70.8	50.3	45.3	40.3	30.3
10. 6 Old North Road	71.5	51.5	46.5	41.5	31.5
11. 8 Old North Road	70.1	50.1	45.1	40.1	30.1
12. 16 Old North Road	68.7	48.7	43.7	38.7	28.7
13. 3 Sabbaday Lane	67.5	47.5	42.5	37.5	27.5
14. 14 Bell Hill Road	58.6	38.6	33.6	28.6	18.6
15. 6 Old North Road	69.2	49.2	44.2	39.2	29.2

Brooks Acoustics predicts a 35 dBA airborne noise level at the nearest house (Page 10<sup>2</sup>). Their report assumes a distance of 500 feet. The CT Noise Ordinance stipulates measurements at the property line.

*“(g) Measurements taken to determine compliance with Section 3 shall be taken at about one foot beyond the boundary of the Emitter Noise Zone within the receptors’s Noise Zone.”<sup>1</sup>*

Section 22a-69-5 Page 16. The property line for the closest property is about 135 meters (443 feet) which raises Brooks estimate by about 1 dB at the property line. In any case, it is clear from Table 2 that **the noise mitigation has to be about 40 dB, not 25 to 30 dB in order to achieve the 35 dBA level displayed in the Brooks Acoustics report.**

*“When the green light is on, the music level will be such that the resulting sound at the nearest neighbor (~ 500 feet distance) is within the limits set by the Regulations of Connecticut State Agencies (RCSA Section 22a – 69) and be at or below the design target level.”<sup>2</sup>*

*“Musical entertainment acts will be housed inside a sound-isolating Music Shed building inside the Hospitality Tent. Also, sound absorbing and blocking materials will be installed and added to the existing tent which will further reduce the amount of sound which may escape the tent facility. It is conservatively estimated that these features will reduce the level of sound which leaves the Hospitality Tent by about **25 to 30 dBA.**”<sup>2</sup>*

## Analysis

This section analyzes the airborne noise levels predicted at the Mayflower site with the new mitigation measures suggested in reference 2. An estimate of the source level and transmission loss to nearby properties during event operation is then calculated by two methods. These levels are then compared to the noise limits in the Connecticut noise ordinance and the predictions from the Mayflower Mitigation Plans. These estimated levels will identify which nearby locations do or do not meet the airborne noise requirements.

Acoustical Technologies Inc.

Brooks Acoustics proposes a music shed in reference 2 that effectively attenuates the sound transmission through the walls of the music shed. All the sound is directed out of the shed in the south easterly direction and then into the tent. Powerstation Events in reference 4 adds speakers inside the tent to effectively smooth out the directed sound leaving the music shed.

*“Multiple small format loudspeakers will be focused and individually controlled providing a near-field audio environment throughout the event space.” Page 2<sup>4</sup>*

The result of these combined efforts is essentially to provide the ability to make a more uniform music environment of approximately 100 dBA at 5 feet when there are 120 people in the tent. To a great extent this approach defeats the purpose of having a music shed since the music is no longer directed in just the south easterly direction. We would now have a tent where the majority of its surface area is exposed to a sound level radiating approximately 100 dBA when measured at 5 feet. Airborne noise levels in 2021 had just the tent walls to attenuate the music and the results for the nearby neighbors are shown in Table 1. The airborne noise levels in 2022 will have the tent walls plus the acoustic absorber material placed on the walls of the tent. Given this approach the mitigation is limited to roughly 10 dB not the 40 dB needed to reach the much lower 35 dBA noise levels at the nearest neighbor. Closest neighbors would see 65 dBA levels.

*“The sound absorbent panels will decrease the emitted sound from the tent by between 8 and 10 dB.” Page 4<sup>2</sup>*

Another very important issue of concern is the music that is diffracted around the edge of the music shed. Assume that we turn off the multiple small format loudspeakers that are in the tent and just look at the sound directly leaving the music shed. Some of that sound will diffract around the west edge of the shed and head towards the nearby neighbors. This diffraction is depicted in Figure 5. We assume the shed is about 20 feet wide and the source is in the center about 1 meter back from the front edge of the shed. Figure 5 shows that the level at the closest neighbor has dropped from 75.4 dBA to 65.3 dBA. If we add another 10 dB for the absorber material on the tent walls the result is about 55 dBA, not the 35 dBA that was predicted in reference 2. If we move the source further back from the edge by a half meter the noise level at 23 Wykeham only drops by 1 dB. If we move the source from the middle to 5 feet from the west edge the noise level at 23 Wykeham again only drops by 1 dB. Because of the diffraction around the west edge, the shed is probably capable of only about a 10 dB improvement over not having a shed. This means that by this mitigation approach only a 20 dB total improvement is possible. The nearest neighbors would see 55 dBA levels, near or just below the daytime CT noise limit.

Brooks Acoustics mentions that site observations were made but no measurements of the noise level at neighboring property lines were included in their report.<sup>2</sup> Without actual measurements, estimates of the transmission loss must be used that can be inaccurate. It is recommended that an acoustic test be conducted with a measured source at the tent location and receivers at the ten closest neighbors in order to determine how much propagation loss actually occurs. With this information the amount of necessary noise mitigation can accurately be determined.

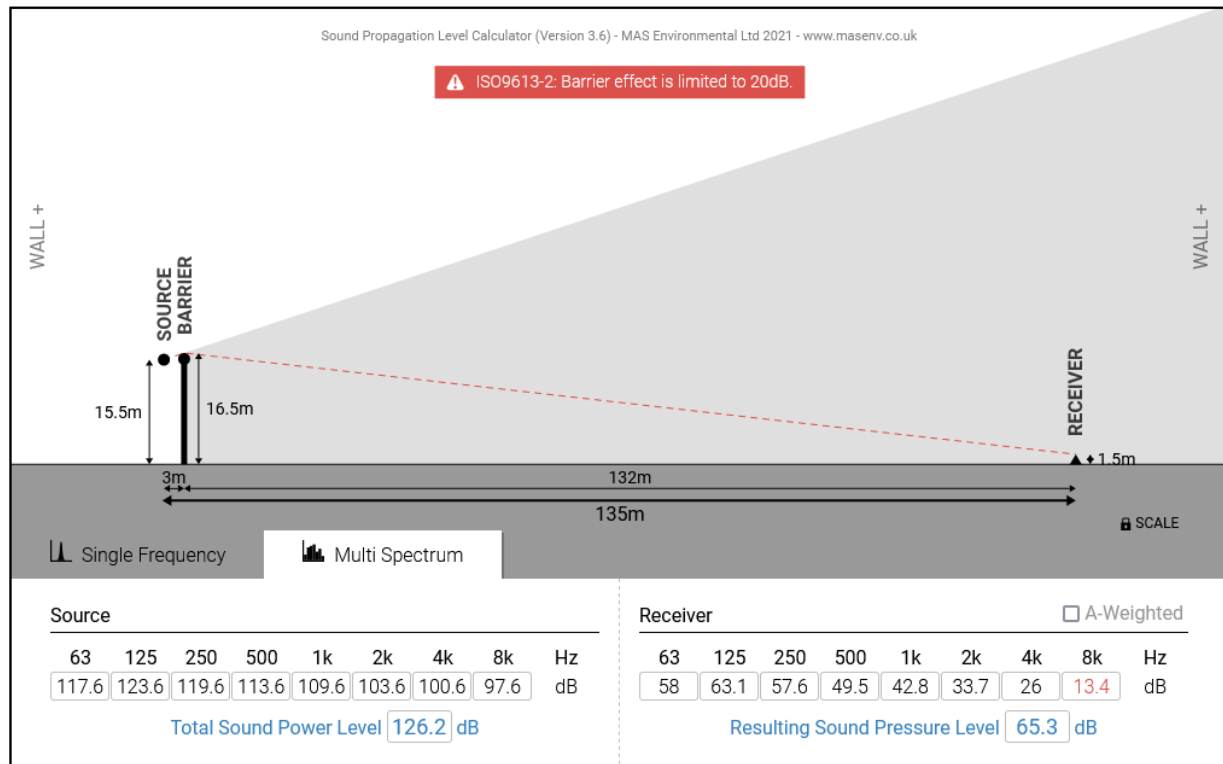
*“As part of this study, site observations were made to assist in the evaluation of the Tent acoustics and visits were made to the neighborhood in the vicinity.” Page 1<sup>2</sup>*

Acoustical Technologies Inc.

Figure 5. Diffraction Estimate at 23 Wykeham Rd for Music Shed with Source Centered in Shed

Sound Propagation Level Calculator

[Interactive noise source-to-receiver diagram with barrier calculations](#)



“Sound levels will be monitored inside the Hospitality Tent on a continuous basis. The monitor equipment will provide a visual indication to the entertainment providers and to the facility management regarding the acceptable volume level of the musical entertainment. This can take the form of green, yellow and red indicator lights. When the green light is on, the music level will be such that the resulting sound at the nearest neighbor (~ 500 feet distance) is within the limits set by the Regulations of Connecticut State Agencies (RCSA Section 22a – 69) and be at or below the design target level.” Page 5<sup>2</sup>

It turns out that the Mayflower neighborhood in Washington, CT is a very quiet place. Background noise levels measured by ATI on January 27, 2022 were as follows:

Location	L10	L50	L90	Minimum
2 Old North Road at property line	39.7	37.3	<b>35.8</b>	34.7
21 Wykeham Road at property line	40.7	39.4	<b>38.3</b>	37.8
25 Wykeham Road at the street	41.4	38.5	<b>35.4</b>	34.1
3 Sabbaday Lane at street	35.4	33.4	<b>32.0</b>	30.7
6 Old North Road at house	40.5	38.5	<b>36.0</b>	35.3

It looks like 30 dBA is a more reasonable estimate of background sound levels near the tent.

Acoustical Technologies Inc.

The L90 backgrounds ranged from 32 to 38 dBA.

21 Wykeham was higher because of the running refrigeration plant at the nearby ice rink.

25 Wykeham was higher because it had a large number of birds chirping.

2 and 6 Old North were higher because of long distance traffic noise from Route 47.

ATI couldn't take data from 27 to 42 Wykeham because two Spectrum cable trucks were temporarily raising the noise levels above 40 dBA.

Given that the noise mitigation will probably be no more than 20 dB the only way to achieve a 30 dBA level at the nearest house will be to turn down the music within the tent using the musical entertainment management program. The 100 dBA at 5 feet will need to be lowered to about 75 dBA at 5 feet. Unfortunately, that level of sound is probably near or below the level of speaking noise generated by the 120 people in the tent. Music at 75 dBA at 5 feet is not going to work. The noise mitigation should be increased from the proposed 20 dB to about 45 dB.

Table 3 provides estimates of the sound attenuation produced by different types of wall construction<sup>5</sup>. These construction methods all provide a STC of at least 45 dB if using insulated walls and would be capable of mitigating the airborne noise concerns. Note that addition of absorbing material provides 6 to 11 dB of improvement in the wall performance, similar to the 8 to 10 dB indicated by Brooks Acoustics. The Mayflower Hospitality tent cannot reasonably provide the 45 dB of mitigation whereas a building can.

**Table 3. STC Ratings for Walls Formed from Two Layers of Wallboard\***

Wall construction	Number of Layers of Wallboard on Each Wall Surface		
	1+1	1+2	2+2
38 x 89 mm wood studs with resilient steel channels on one side	48 [40]	52 [44]	56 [52]
Staggered 38 x 89 mm wood studs	50 [41]	53 [47]	55 [52]
Double row of 38 x 89 mm wood studs with small gap between them	57 [46]	60 [52]	63 [57]
90 mm steel studs	45 [39]	49 [45]	56 [50]
150 mm load-bearing steel studs with resilient metal channels on one side	58	60	63

\*Values not in brackets are for walls filled with sound absorbing material. Values in brackets are for walls without sound absorbing material.

Another issue is a lack of a vestibule in the current design. Opening the doors to the tent will defeat the mitigation currently planned. While the doors are open the noise levels at nearby properties will increase by 10 to 20 dB depending on whether 1, 2, 3 or 4 doors are open.

### Prominent Discrete Tones

The Connecticut regulation for the control of noise states in *CT section 22a-69-3.3 Prominent discrete tones*: Continuous noise measured beyond the boundary of the Noise Zone of the noise emitter in any other Noise Zone which possesses one or more audible discrete tones shall be considered excessive noise when a level of 5 dBA below the levels specified in section 3 of these Regulations is exceeded. By my reading of the regulations the Hospitality Tent site is a Class A emitter in a Residential Zone. The noise zone standards in *CT section 22a-69-3.5* state that a Class A emitter cannot exceed the following overall sound pressure levels:

To Class C 62 dBA To Class B 55 dBA To Class A **55 dBA (day) 45 dBA (night)**

The discrete tones limits are 5 dBA lower so that no tone may be higher than the following:

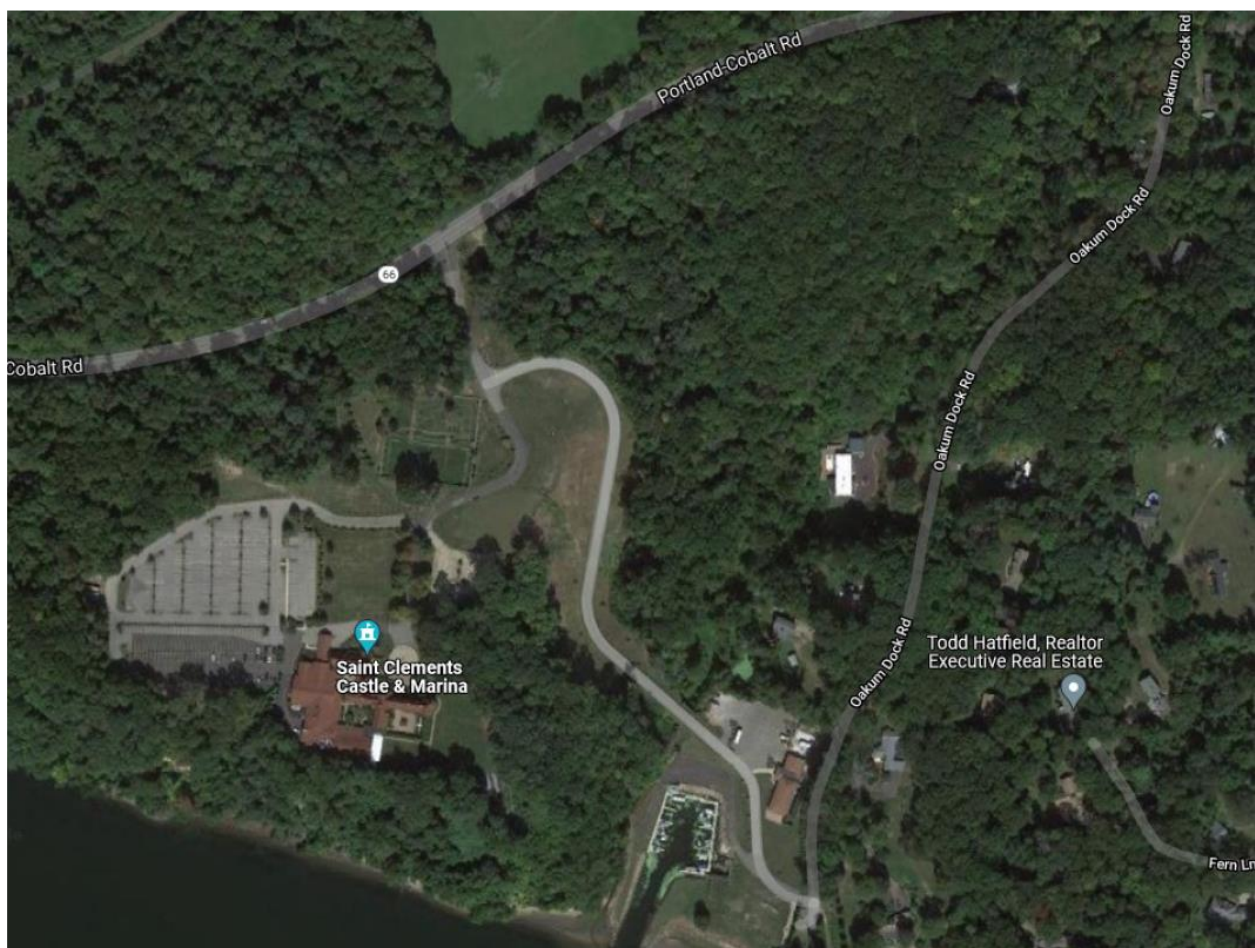
To Class C 57 dBA To Class B 50 dBA To Class A **50 dBA (day) 40 dBA (night)**

Acoustical Technologies Inc.

The presence or absence of significant tones in the music played in the tent has not been identified in the documents submitted for the Special Permit Application. For most music this will probably not be an issue. For some music it could be significant in that the music could meet the overall dBA limit but not the discrete tone limit which is 5 dB lower. This uncertainty makes it more necessary to design the facility for a 30 dBA goal at the closest property line with 45 dB of noise mitigation.

“Events will occur between 11 a.m. and 10:30 p.m.”<sup>7</sup> After 10 pm the noise ordinance requires a 10 dB reduction in airborne noise in residential areas. (The Special Permit Application could be modified to end events at 10 pm so that the lower night time noise limit would not apply.)

Figure 6 Saint Clements Castle & Marina



←----- 1000 feet ----->

Comments by the applicant’s consultants indicated that both the Saint Clements Castle and the Barn at Wesleyan Hills were venues operating without complaints from their neighbors. In Figures 6 and 7 one can see that both of these venues are quite different from the individual rural residential homes in Washington CT. It should be noted that both are indoor venues. Neither facility addresses the acoustic issues of placing a tent among quiet rural residential homes.

Acoustical Technologies Inc.

Figure 7 The Barns at Wesleyan Hills



## Conclusions

The purpose of this effort is to evaluate the acoustical environment for the neighbors of the Mayflower site during operation of the Hospitality Tent. This effort has been accomplished and the results show that the currently planned noise mitigation does not meet the State of Connecticut airborne noise requirements at the closest nearby properties in the R-1 Residential Zone. As planned the nearest airborne noise levels would be as much as 65 dBA. Additional noise treatment is needed to address the noise issue and bring the currently excessive airborne noise levels down at least 5 dB below the proposed 35 dBA level at the closest property. Achieving 45 dB of noise mitigation in a tent format is extremely difficult. A more typical solution for wedding events is to design a building with substantial walls.



## References

- 1) CT DE&EP *Noise Control Regulation RCSA Section 22a-69-1 to 22a-69-7.4*  
<http://www.ct.gov/dep/lib/dep/regulations/22a/22a-69-1through7.pdf>
  - 2) Hospitality Tent Acoustical Design, Brooks Acoustics Corporation, 12 November 2021
  - 3) <http://noisetools.net/noisecalculator2>
  - 4) Mayflower Inn & Spa Mitigation Plan ..., Powerstation Events, 12 November 2021
  - 5) [http://web.mit.edu/parmstr/Public/NRCan/CanBldgDigests/cbd239\\_e.html](http://web.mit.edu/parmstr/Public/NRCan/CanBldgDigests/cbd239_e.html)
  - 6) ASHRAE Handbook, page 224, ASHRAE-HANDBOOK-Sound-and-Vibration-Control.pdf,  
[http://thermairsystems.com > uploads > 2011/10, 279 pages](http://thermairsystems.com/uploads/2011/10/279_pages)
- 7) **Special Permit Application** from MSFPA2013 (“**Auberge/Mayflower**”) dated November 15, 2021

## Appendix

The Sound Power level in the Sound Propagation Level Calculator is found from the following equation<sup>6</sup>. The Sound Pressure was taken from page 10 of reference 2.

$$\text{Sound Power} = \text{Sound Pressure} + 20 \text{ Log } (d) + 0.7 - 10 \text{ Log } (Q) = \text{Sound Pressure} + 11.6 \text{ dB}$$

Where  $Q = 2$  for a hemisphere and  $d = 5$  feet

Also, if the distance is greater than about 500 ft, wind, thermal gradients, and atmospheric sound absorption need to be considered. This means the calculations for the closest neighbors are reasonably accurate but at greater distances the accuracy probably falls off suggesting that actual measurements might be needed to determine the propagation loss.