

|            |           |
|------------|-----------|
| DATE:      | LOCATION: |
| TYPE:      | PROJECT:  |
| CATALOG #: |           |

# SLING Micro Strike

AREA/SITE/ROAD LIGHTER

## FEATURES

- Compact sleek design with multiple LED configurations and simple installation
- The SLING includes a universal mounting block for easy pole installation or mast arm option for 2-3/8 ft OD roadway brackets
- Capable of replacing up to 1000w HID luminaires
- Micro Strike optical distributions of Type 2, 3, 4F, 4W or 5QW
- Tool-less entry option for easy installation and maintenance
- 1.5G rated for high vibration applications including bridges and overpasses



10-DAY QUICK SHIP PROGRAM



## SPECIFICATIONS

### CONSTRUCTION

- Die-cast housing with hidden vertical heat fins that are optimal for heat dissipation while keeping a clean smooth outer surface
- Corrosion resistant, die-cast aluminum housing with powder coat paint finish
- Separate optical and electrical compartment for improved thermal management and optimum component operation
- TGIC thermost polyester powder paint finish applied at nominal 2.5 mil thickness

### OPTICS

- Entire optical aperture illuminates to create a larger luminous surface area resulting in a low glare appearance without sacrificing optical performance
- Premium engineered individual acrylic lenses deliver IES Type 2, 3, 4F, 4W and 5QW distributions
- Lens distributions are field rotatable (in 90° increments) or exchangeable for job site fine-tuning
- 3000K, 4000K, or 5000K (70 CRI) CCT
- 80, 160, or 320 midpower LEDs
- 3000K, 4000K or 5000K (70 CRI) CCT
- Zero uplight at 0 degrees of tilt
- Field rotatable optics

### INSTALLATION

- Tool-less entry to wiring/driver compartment optional
- Arm mounting works with S2 drill pattern
- Fixture ships with slotted mounting block to accommodate wide range of drill patterns for easy retrofit opportunities
- Mast arm fitter accessory or option available for 2-3/8" OD brackets with vertical tilt of +3°, 0° or -3°

### ELECTRICAL

- Universal 120-277 VAC or 347-480 VAC input voltage, 50/60 Hz
- Ambient operating temperature -40° C to 40° C
- Drivers have greater than 90% power factor and less than 20% THD
- LED drivers have output power over-voltage, over-current protection and short circuit protection with auto recovery
- Field replaceable surge protection device provides 20KA and 10KV protection meeting ANSI/IEEE C62.41.2 Category C High and Surge Location Category C3; Automatically takes fixture off-line for protection when device is consumed

### CONTROLS

- Photo control, occupancy sensor and Zigbee wireless available for complete on/off and dimming control
- 7-pin ANSI C136.41-2013 photocontrol receptacle option available for twist lock photocontrols or wireless control modules (control accessories sold separately)
- Dimming Drivers are standard and dimming leads are extended out of the luminaire unless control options require connection to the dimming leads. Must specify if wiring leads are to be greater than the 6
- Please consult brand or sales representative when combining control and electrical options as some combinations may not operate as anticipated depending on your application

### CERTIFICATIONS

- Listed to UL1598 and CSA C22.2#250.0-24 for wet voltage and 40°C ambient temperatures

### CERTIFICATIONS (CONTINUED)

- DLC® (DesignLights Consortium Qualified), with some Premium Qualified configurations. Not all product variations on this page are DLC Qualified. Refer to <http://www.designlights.org/> for the most up-to-date list.
- 1.5G rated for ANSI C136.31 high vibration applications
- IP65 optical assembly
- Meets IDA recommendations using 3K CCT configuration at 0 degrees of tilt
- This product qualifies as a "designated country construction material" per FAR 52.225-11 Buy American-Construction Materials under Trade Agreements effective 04/23/2020.

### WARRANTY

- 5 Year warranty

| KEY DATA             |                     |
|----------------------|---------------------|
| Lumen Range          | 3,200-36,000        |
| Wattage Range        | 25-255              |
| Efficacy Range (LPW) | 118-148             |
| Weight lbs. (kg)     | 14.5-17.5 (6.6-8.0) |

DATE: \_\_\_\_\_ LOCATION: \_\_\_\_\_  
 TYPE: \_\_\_\_\_ PROJECT: \_\_\_\_\_  
 CATALOG #: \_\_\_\_\_

# SLING Micro Strike

AREA/SITE/ROAD LIGHTER

= Service Program  
 Limit of 15 luminaires 

## ORDERING GUIDE

Example: ASL1-80L-50-3K7-2-UNV-ASQU-BLT-7PRMD-40F

CATALOG # \_\_\_\_\_

## ORDERING INFORMATION

| Series                      | # LEDs   | CCT/CRI   | Distribution | Voltage                | Mounting                                     |
|-----------------------------|----------|-----------|--------------|------------------------|--|
| ASL1 ASL Microstrike Series | 80L-25   | 3,000 lm  | 2 Type II    | UNV Universal 120-277V | A Arm for Square poles with S2 drill pattern |
|                             | 80L-39   | 4,500 lm  | 3 Type III   | 120 120V               | A3 AS with 3.5-4.13" OD RPA3 & UM            |
|                             | 80L-50   | 6,000 lm  | 4F Type 4F   | 208 208V               | A4 AS with 4.18-5.25" OD RPA4 & U            |
|                             | 160L-70  | 9,000 lm  | 4W Type 4W   | 240 240V               | A5 AS with 5.5-6.5" OD RPA5 & UM             |
|                             | 160L-100 | 12,000 lm | 5QW Type 5QW | 277 277V               | MAF Mast Arm Fitter for 2-3/8" OD            |
|                             | 160L-115 | 15,000 lm |              | 347 347V               |  |
|                             | 160L-135 | 18,000 lm |              | 480 480V               |  |
| ASL2 ASL Microstrike Series | 320L-145 | 21,000 lm |              |                        |  |
|                             | 320L-170 | 24,000 lm |              |                        |  |
|                             | 320L-185 | 27,000 lm |              |                        |  |
|                             | 320L-210 | 30,000 lm |              |                        |  |
|                             | 320L-235 | 33,000 lm |              |                        |  |
|                             | 320L-255 | 35,000 lm |              |                        |  |

| Control Options Other   | Options               | Color                          |
|---|-----------------------|--------------------------------|
| 7PR 7 Pin Receptacle  | F <sup>1</sup> Fusing | BLT Black Matte Textured       |
| 7PR-SC 7 Pin Receptacle with shorting cap   | BC Backlight Control  | BLS Black Gloss Smooth         |
| 7PR-MD8F 7 pin receptacle with low voltage sensor at 8' mounting for external control accessory                 |                       | DBT Dark Bronze Matte Textured |
| 7PR-MD40F 7 pin receptacle with low voltage sensor at 40' mounting for external control accessory               |                       | DBS Dark Bronze Gloss Smooth   |
| 7PR-TL 7 Pin Receptacle with Photocontrol   |                       | GTT Graphite Matte Textured    |
| <b>Sensors</b>  |                       | LGS Light Grey Gloss Smooth    |
| BTS_F Bluetooth Programmable, PIR Occupancy/Daylight Sensor, 360° lens <sup>2</sup>                             |                       | LGT Light Grey Matte Textured  |
| BTSO_F Bluetooth Programmable, PIR Occupancy/Daylight Sensor, 360° lens, up to 12' mounting height <sup>3</sup> |                       | PSS Platinum Silver Smooth     |
|   |                       | WHT White Matte Textured       |
|   |                       | WHS White Gloss Smooth         |
|   |                       | VGT Verde Green Textured       |
|   |                       | <b>Color Option</b>            |
|   |                       | CC Custom Color                |

Notes:  
 1 Must specify Voltage  
 2 Replace "\_" with "14" for up to 14' mounting height, "40F" for 15-40' mounting height  
 3 Replace "\_" with "12" for up to 12' mounting height

# SLING Micro Strike

AREA/SITE/ROAD LIGHTER

## ACCESSORIES (ORDERED SEPARATELY)

| Catalog Number   | Description  |
|--|--|
| <input type="checkbox"/> ASL1-HSS-90-B-XXX <sup>1</sup>    | House Side Shield Back 90 deg  |
| <input type="checkbox"/> ASL1-HSS-90-F-XXX <sup>1</sup>    | House Side Shield Front 90 deg   |
| <input type="checkbox"/> ASL1-HSS-90-S-XXX <sup>1</sup>    | House Side Shield Side 90 deg  |
| <input type="checkbox"/> ASL1-HSS-270-BSS-XXX <sup>1</sup> | House Side Shield Back, Side & Side 270 deg  |
| <input type="checkbox"/> ASL1-HSS-270-FSS-XXX <sup>1</sup> | House Side Shield Front, Side & Side 270 deg   |
| <input type="checkbox"/> ASL1-HSS-270-FSB-XXX <sup>1</sup> | House Side Shield Front, Side & Back 270 deg   |
| <input type="checkbox"/> ASL1-HSS-360-XXX <sup>1</sup>     | House Side Shield 360 deg  |
| <input type="checkbox"/> ASL2-HSS-90-B-XXX <sup>1</sup>    | House Side Shield Back 90 deg  |
| <input type="checkbox"/> ASL2-HSS-90-F-XXX <sup>1</sup>    | House Side Shield Front 90 deg   |
| <input type="checkbox"/> ASL2-HSS-90-S-XXX <sup>1</sup>    | House Side Shield Side 90 deg  |
| <input type="checkbox"/> ASL2-HSS-270-BSS-XXX <sup>1</sup> | House Side Shield Back, Side & Side 270 deg  |
| <input type="checkbox"/> ASL2-HSS-270-FSS-XXX <sup>1</sup> | House Side Shield Front, Side & Side 270 deg   |
| <input type="checkbox"/> ASL2-HSS-270-FSB-XXX <sup>1</sup> | House Side Shield Front, Side & Back 270 deg   |
| <input type="checkbox"/> ASL2-HSS-360-XXX <sup>1</sup>     | House Side Shield 360 deg  |
| <input type="checkbox"/> ASL-MAF                           | Mast arm kit with wildlife shield for mounting on 2 3/8" OD arms   |
| <input type="checkbox"/> SETA2-XX <sup>1</sup>             | Square pole tenon adapter (4 at 90 degrees) (2 3/8" OD tenon)  |
| <input type="checkbox"/> RETA2-XX <sup>1</sup>             | Round pole tenon adapter (4 at 90 degrees) (2 3/8" OD tenon), requires CL1S-RPA4-ACC-XX for each luminaire |
| <input type="checkbox"/> RARBC80L                          | Backlight Control 80L  |
| <input type="checkbox"/> RARBC160L                         | Backlight Control 160L   |
| <input type="checkbox"/> RARBC320L                         | Backlight Control 320L   |
| <input type="checkbox"/> RARBC480L                         | Backlight Control 480L   |
| <input type="checkbox"/> CL1S-RPA4-ACC-XX <sup>1</sup>     | Round Pole Adapter (* denotes pole diameter; 3 = 3 1/4" - 3 3/4"; 4* = 3 7/8" - 6")                        |
| <input type="checkbox"/> ASL-ARMMTG-XX <sup>1</sup>        | Arm mounting kit for side of pole attachment   |
| <input type="checkbox"/> WB-AREA-XX <sup>1</sup>           | Wall bracket, Compatible with standard arm mount option  |
| <input type="checkbox"/> ASL-MAF                           | Mast arm kit with wildlife shield for mounting on 2 3/8" OD arms   |

<sup>1</sup> Replace XX or XXX with color choice, eg.: DB for Dark Bronze or BLT for Black Matte Textured

# SLING Micro Strike

AREA/SITE/ROAD LIGHTER

## PERFORMANCE DATA

| Description | Nominal Wattage | System Watts | Dist. Type | 5K (5000K NOMINAL 70 CRI) |                  |   |   |   | 4K (4000K NOMINAL 70 CRI) |                  |   |   |   | 3K (3000K NOMINAL 70 CRI) |                  |   |   |   |
|-------------|-----------------|--------------|------------|---------------------------|------------------|---|---|---|---------------------------|------------------|---|---|---|---------------------------|------------------|---|---|---|
|             |                 |              |            | Lumens                    | LPW <sup>1</sup> | B | U | G | Lumens                    | LPW <sup>1</sup> | B | U | G | Lumens                    | LPW <sup>1</sup> | B | U | G |
| ASL1        | 25              | 25.4         | 2          | 3430                      | 135              | 2 | 0 | 2 | 3413                      | 134              | 2 | 0 | 2 | 3225                      | 127              | 2 | 0 | 2 |
|             |                 |              | 3          | 3465                      | 136              | 2 | 0 | 2 | 3448                      | 136              | 2 | 0 | 2 | 3259                      | 128              | 2 | 0 | 2 |
|             |                 |              | 4F         | 3204                      | 126              | 1 | 0 | 1 | 3201                      | 126              | 1 | 0 | 1 | 3127                      | 123              | 1 | 0 | 1 |
|             |                 |              | 4W         | 3401                      | 134              | 2 | 0 | 3 | 3384                      | 133              | 2 | 0 | 3 | 3198                      | 126              | 2 | 0 | 3 |
|             |                 |              | 5QW        | 3483                      | 137              | 4 | 0 | 2 | 3466                      | 136              | 4 | 0 | 2 | 3274                      | 129              | 4 | 0 | 2 |
|             | 39              | 38.0         | 4F         | 5005                      | 132              | 1 | 0 | 1 | 5000                      | 132              | 1 | 0 | 1 | 4885                      | 129              | 1 | 0 | 1 |
|             | 40              | 38.0         | 2          | 5232                      | 138              | 3 | 0 | 3 | 5206                      | 137              | 3 | 0 | 3 | 4919                      | 129              | 3 | 0 | 3 |
|             |                 |              | 3          | 5287                      | 139              | 2 | 0 | 2 | 5260                      | 138              | 2 | 0 | 2 | 4971                      | 131              | 2 | 0 | 2 |
|             |                 |              | 4W         | 5188                      | 137              | 2 | 0 | 3 | 5163                      | 136              | 2 | 0 | 3 | 4879                      | 128              | 2 | 0 | 3 |
|             |                 |              | 5QW        | 5319                      | 140              | 4 | 0 | 2 | 5292                      | 139              | 4 | 0 | 2 | 4975                      | 131              | 4 | 0 | 2 |
|             | 50              | 49.7         | 2          | 6295                      | 127              | 2 | 0 | 2 | 6263                      | 126              | 2 | 0 | 2 | 5918                      | 119              | 2 | 0 | 2 |
|             |                 |              | 3          | 6361                      | 128              | 2 | 0 | 2 | 6329                      | 127              | 2 | 0 | 2 | 5981                      | 120              | 2 | 0 | 2 |
|             |                 |              | 4F         | 6407                      | 129              | 1 | 0 | 2 | 6401                      | 129              | 1 | 0 | 2 | 6254                      | 126              | 1 | 0 | 2 |
|             |                 |              | 4W         | 6243                      | 126              | 2 | 0 | 3 | 6212                      | 125              | 2 | 0 | 3 | 5870                      | 118              | 2 | 0 | 3 |
|             |                 |              | 5QW        | 6392                      | 129              | 4 | 0 | 2 | 6360                      | 128              | 4 | 0 | 2 | 6009                      | 121              | 4 | 0 | 2 |
|             | 70              | 68.4         | 2          | 9460                      | 138              | 3 | 0 | 3 | 9413                      | 138              | 3 | 0 | 3 | 8895                      | 130              | 3 | 0 | 3 |
|             |                 |              | 3          | 9559                      | 140              | 2 | 0 | 2 | 9512                      | 139              | 2 | 0 | 2 | 8989                      | 131              | 2 | 0 | 2 |
|             |                 |              | 4F         | 8988                      | 131              | 2 | 0 | 2 | 8979                      | 131              | 2 | 0 | 2 | 8772                      | 128              | 2 | 0 | 2 |
|             |                 |              | 4W         | 9382                      | 137              | 2 | 0 | 3 | 9335                      | 136              | 2 | 0 | 3 | 8822                      | 129              | 2 | 0 | 3 |
|             |                 |              | 5QW        | 9610                      | 140              | 4 | 0 | 2 | 9562                      | 140              | 4 | 0 | 2 | 9034                      | 132              | 4 | 0 | 2 |
|             | 100             | 88.0         | 2          | 11939                     | 136              | 2 | 0 | 2 | 11885                     | 135              | 2 | 0 | 2 | 11232                     | 128              | 2 | 0 | 2 |
|             |                 |              | 3          | 12064                     | 138              | 2 | 0 | 2 | 12010                     | 136              | 2 | 0 | 2 | 11349                     | 129              | 2 | 0 | 2 |
|             |                 |              | 4F         | 12832                     | 146              | 2 | 0 | 2 | 12819                     | 146              | 2 | 0 | 2 | 12524                     | 142              | 2 | 0 | 2 |
|             |                 |              | 4W         | 11840                     | 135              | 2 | 0 | 3 | 11787                     | 135              | 2 | 0 | 3 | 11138                     | 127              | 2 | 0 | 3 |
|             |                 |              | 5QW        | 12132                     | 138              | 4 | 0 | 2 | 12071                     | 138              | 4 | 0 | 2 | 11404                     | 130              | 4 | 0 | 2 |
|             | 115             | 109.7        | 2          | 15651                     | 143              | 2 | 0 | 2 | 15577                     | 142              | 2 | 0 | 2 | 14977                     | 137              | 2 | 0 | 2 |
|             |                 |              | 3          | 15487                     | 141              | 2 | 0 | 2 | 15413                     | 140              | 2 | 0 | 2 | 14820                     | 135              | 2 | 0 | 2 |
|             |                 |              | 4F         | 14754                     | 134              | 2 | 0 | 2 | 14740                     | 134              | 2 | 0 | 2 | 14401                     | 131              | 2 | 0 | 2 |
|             |                 |              | 4W         | 15305                     | 140              | 2 | 0 | 3 | 15232                     | 139              | 2 | 0 | 3 | 14646                     | 134              | 2 | 0 | 3 |
|             |                 |              | 5QW        | 15731                     | 143              | 4 | 0 | 2 | 15632                     | 143              | 4 | 0 | 2 | 15031                     | 137              | 4 | 0 | 2 |
|             | 135             | 133.3        | 2          | 18089                     | 136              | 3 | 0 | 3 | 17999                     | 135              | 3 | 0 | 3 | 17275                     | 130              | 3 | 0 | 3 |
|             |                 |              | 3          | 17863                     | 134              | 2 | 0 | 2 | 17777                     | 133              | 2 | 0 | 2 | 17094                     | 128              | 2 | 0 | 2 |
|             |                 |              | 4F         | 17317                     | 130              | 3 | 0 | 3 | 17300                     | 130              | 3 | 0 | 3 | 16902                     | 127              | 2 | 0 | 3 |
|             |                 |              | 4W         | 17653                     | 133              | 2 | 0 | 3 | 17568                     | 132              | 2 | 0 | 3 | 16893                     | 127              | 2 | 0 | 3 |
|             |                 |              | 5QW        | 18155                     | 136              | 4 | 0 | 2 | 18030                     | 135              | 4 | 0 | 2 | 17338                     | 130              | 4 | 0 | 2 |

ASL2 Performance Data on next page

<sup>1</sup> VAC input Lumen values are from photometric test performed in accordance with IESNA LM-79-08. Data is considered to be representative of the configurations. Actual performance may differ as a result of end-user environment and application.

# SLING Micro Strike

AREA/SITE/ROAD LIGHTER

## PERFORMANCE DATA

| Description | Nominal Wattage | System Watts | Dist. Type | 5K (5000K NOMINAL 70 CRI) |                  |   |   |       | 4K (4000K NOMINAL 70 CRI) |                  |   |   |       | 3K (3000K NOMINAL 70 CRI) |                  |   |   |   |
|-------------|-----------------|--------------|------------|---------------------------|------------------|---|---|-------|---------------------------|------------------|---|---|-------|---------------------------|------------------|---|---|---|
|             |                 |              |            | Lumens                    | LPW <sup>1</sup> | B | U | G     | Lumens                    | LPW <sup>1</sup> | B | U | G     | Lumens                    | LPW <sup>1</sup> | B | U | G |
| ASL2        | 145             | 143.0        | 2          | 21007                     | 147              | 3 | 0 | 4     | 20902                     | 146              | 3 | 0 | 4     | 20061                     | 140              | 3 | 0 | 4 |
|             |                 |              | 3          | 20842                     | 146              | 3 | 0 | 4     | 20738                     | 145              | 3 | 0 | 4     | 19904                     | 139              | 3 | 0 | 4 |
|             |                 |              | 4F         | 19490                     | 136              | 3 | 0 | 3     | 19471                     | 136              | 3 | 0 | 3     | 19023                     | 133              | 3 | 0 | 3 |
|             |                 |              | 4W         | 20595                     | 144              | 3 | 0 | 5     | 20492                     | 143              | 3 | 0 | 5     | 19669                     | 138              | 3 | 0 | 5 |
|             |                 |              | 5QW        | 21130                     | 148              | 5 | 0 | 4     | 21024                     | 147              | 5 | 0 | 4     | 20179                     | 141              | 5 | 0 | 4 |
|             | 170             | 168.0        | 2          | 24452                     | 146              | 3 | 0 | 4     | 24330                     | 145              | 3 | 0 | 4     | 23351                     | 139              | 3 | 0 | 4 |
|             |                 |              | 3          | 24260                     | 144              | 3 | 0 | 4     | 24139                     | 144              | 3 | 0 | 4     | 23168                     | 138              | 3 | 0 | 4 |
|             |                 |              | 4F         | 22847                     | 136              | 3 | 0 | 4     | 22824                     | 136              | 3 | 0 | 4     | 22299                     | 133              | 3 | 0 | 3 |
|             |                 |              | 4W         | 23972                     | 143              | 3 | 0 | 5     | 23853                     | 142              | 3 | 0 | 5     | 22895                     | 136              | 3 | 0 | 5 |
|             |                 |              | 5QW        | 24596                     | 146              | 5 | 0 | 4     | 24472                     | 146              | 5 | 0 | 4     | 23488                     | 140              | 5 | 0 | 4 |
|             | 185             | 185.0        | 2          | 26658                     | 144              | 4 | 0 | 5     | 26525                     | 143              | 4 | 0 | 5     | 25457                     | 138              | 4 | 0 | 5 |
|             |                 |              | 3          | 26449                     | 143              | 3 | 0 | 4     | 26316                     | 142              | 3 | 0 | 4     | 25258                     | 137              | 3 | 0 | 4 |
|             |                 |              | 4F         | 24834                     | 134              | 3 | 0 | 4     | 24809                     | 134              | 3 | 0 | 4     | 24238                     | 131              | 3 | 0 | 3 |
|             |                 |              | 4W         | 26135                     | 141              | 4 | 0 | 5     | 26005                     | 141              | 4 | 0 | 5     | 24961                     | 135              | 4 | 0 | 5 |
|             |                 |              | 5QW        | 26814                     | 145              | 5 | 0 | 5     | 26680                     | 144              | 5 | 0 | 5     | 25607                     | 138              | 5 | 0 | 5 |
|             | 210             | 210.0        | 2          | 29872                     | 142              | 3 | 0 | 4     | 29723                     | 142              | 3 | 0 | 4     | 28536                     | 136              | 3 | 0 | 4 |
|             |                 |              | 3          | 29638                     | 141              | 3 | 0 | 4     | 29489                     | 140              | 3 | 0 | 4     | 28303                     | 135              | 3 | 0 | 4 |
|             |                 |              | 4F         | 30623                     | 146              | 3 | 0 | 4     | 30592                     | 146              | 3 | 0 | 4     | 20889                     | 142              | 3 | 0 | 4 |
|             |                 |              | 4W         | 29286                     | 139              | 3 | 0 | 5     | 29140                     | 139              | 3 | 0 | 5     | 27970                     | 133              | 3 | 0 | 5 |
|             |                 |              | 5QW        | 30047                     | 143              | 5 | 0 | 4     | 29896                     | 142              | 5 | 0 | 4     | 28694                     | 137              | 5 | 0 | 4 |
|             | 235             | 235.0        | 2          | 32960                     | 140              | 3 | 0 | 4     | 32796                     | 140              | 3 | 0 | 4     | 31475                     | 134              | 3 | 0 | 4 |
|             |                 |              | 3          | 32701                     | 139              | 3 | 0 | 4     | 32537                     | 138              | 3 | 0 | 4     | 31229                     | 133              | 3 | 0 | 4 |
|             |                 |              | 4F         | 31582                     | 134              | 3 | 0 | 4     | 31550                     | 134              | 3 | 0 | 4     | 30825                     | 131              | 3 | 0 | 4 |
|             |                 |              | 4W         | 32313                     | 138              | 3 | 0 | 5     | 32152                     | 137              | 3 | 0 | 5     | 30861                     | 131              | 3 | 0 | 5 |
|             |                 |              | 5QW        | 33153                     | 141              | 5 | 0 | 4     | 32987                     | 140              | 5 | 0 | 4     | 31660                     | 135              | 5 | 0 | 4 |
| 255         | 261.2           | 2            | 36216      | 142                       | 4                | 0 | 5 | 36035 | 141                       | 4                | 0 | 5 | 34585 | 136                       | 4                | 0 | 5 |   |
|             |                 | 3            | 35932      | 141                       | 3                | 0 | 4 | 35752 | 140                       | 3                | 0 | 4 | 34314 | 135                       | 3                | 0 | 4 |   |
|             |                 | 4F           | 34254      | 131                       | 3                | 0 | 4 | 34219 | 131                       | 3                | 0 | 4 | 33432 | 128                       | 3                | 0 | 4 |   |
|             |                 | 4W           | 35505      | 139                       | 4                | 0 | 5 | 35329 | 139                       | 4                | 0 | 5 | 33910 | 133                       | 4                | 0 | 5 |   |
|             |                 | 5QW          | 36428      | 143                       | 5                | 0 | 5 | 36246 | 142                       | 5                | 0 | 5 | 34788 | 136                       | 5                | 0 | 5 |   |

<sup>1</sup> VAC input Lumen values are from photometric test performed in accordance with IESNA LM-79-08. Data is considered to be representative of the configurations. Actual performance may differ as a result of end-user environment and application.

# SLING Micro Strike

AREA/SITE/ROAD LIGHTER

## ELECTRICAL DATA

| Family       | Nominal Wattage | Input Voltage (Volts) | Current (AMPS) | System Power (Watts) |
|--------------|-----------------|-----------------------|----------------|----------------------|
| SLING (ASL1) | 25              | 120                   | 0.21           | 25.4                 |
|              |                 | 208                   | 0.12           |                      |
|              |                 | 240                   | 0.11           |                      |
|              |                 | 277                   | 0.09           |                      |
|              |                 | 347                   | 0.07           |                      |
|              |                 | 480                   | 0.05           |                      |
|              | 39              | 120                   | 0.32           | 38                   |
|              |                 | 208                   | 0.18           |                      |
|              |                 | 240                   | 0.16           |                      |
|              |                 | 277                   | 0.14           |                      |
|              |                 | 347                   | 0.11           |                      |
|              |                 | 480                   | 0.08           |                      |
|              | 50              | 120                   | 0.41           | 49.7                 |
|              |                 | 208                   | 0.24           |                      |
|              |                 | 240                   | 0.21           |                      |
|              |                 | 277                   | 0.18           |                      |
|              |                 | 347                   | 0.14           |                      |
|              |                 | 480                   | 0.10           |                      |
|              | 70              | 120                   | 0.57           | 68.4                 |
|              |                 | 208                   | 0.33           |                      |
|              |                 | 240                   | 0.29           |                      |
|              |                 | 277                   | 0.25           |                      |
|              |                 | 347                   | 0.20           |                      |
|              |                 | 480                   | 0.14           |                      |
|              | 100             | 120                   | 0.73           | 88                   |
|              |                 | 208                   | 0.42           |                      |
|              |                 | 240                   | 0.37           |                      |
|              |                 | 277                   | 0.32           |                      |
|              |                 | 347                   | 0.25           |                      |
|              |                 | 480                   | 0.18           |                      |
| 115          | 120             | 0.91                  | 109.7          |                      |
|              | 208             | 0.53                  |                |                      |
|              | 240             | 0.46                  |                |                      |
|              | 277             | 0.40                  |                |                      |
|              | 347             | 0.32                  |                |                      |
|              | 480             | 0.23                  |                |                      |
| 135          | 120             | 1.11                  | 133.3          |                      |
|              | 208             | 0.64                  |                |                      |
|              | 240             | 0.56                  |                |                      |
|              | 277             | 0.48                  |                |                      |
|              | 347             | 0.38                  |                |                      |
|              | 480             | 0.28                  |                |                      |

SLING (ASL2) Next Page

# SLING Micro Strike

AREA/SITE/ROAD LIGHTER

## ELECTRICAL DATA (CONT'D)

| Family          | Nominal Wattage | Input Voltage (Volts) | Current (AMPS) | System Power (Watts) |
|-----------------|-----------------|-----------------------|----------------|----------------------|
| SLING<br>(ASL2) | 145             | 120                   | 1.19           | 143.0                |
|                 |                 | 208                   | 0.69           |                      |
|                 |                 | 240                   | 0.60           |                      |
|                 |                 | 277                   | 0.52           |                      |
|                 |                 | 347                   | 0.41           |                      |
|                 |                 | 480                   | 0.30           |                      |
|                 | 170             | 120                   | 1.40           | 168.0                |
|                 |                 | 208                   | 0.81           |                      |
|                 |                 | 240                   | 0.70           |                      |
|                 |                 | 277                   | 0.61           |                      |
|                 |                 | 347                   | 0.48           |                      |
|                 |                 | 480                   | 0.35           |                      |
|                 | 185             | 120                   | 1.54           | 185.0                |
|                 |                 | 208                   | 0.89           |                      |
|                 |                 | 240                   | 0.77           |                      |
|                 |                 | 277                   | 0.67           |                      |
|                 |                 | 347                   | 0.53           |                      |
|                 |                 | 480                   | 0.39           |                      |
|                 | 210             | 120                   | 1.75           | 210.0                |
|                 |                 | 208                   | 1.01           |                      |
|                 |                 | 240                   | 0.88           |                      |
|                 |                 | 277                   | 0.76           |                      |
|                 |                 | 347                   | 0.61           |                      |
|                 |                 | 480                   | 0.44           |                      |
|                 | 235             | 120                   | 1.96           | 235.0                |
|                 |                 | 208                   | 1.13           |                      |
|                 |                 | 240                   | 0.98           |                      |
|                 |                 | 277                   | 0.85           |                      |
|                 |                 | 347                   | 0.68           |                      |
|                 |                 | 480                   | 0.49           |                      |
| 255             | 120             | 2.18                  | 261.2          |                      |
|                 | 208             | 1.26                  |                |                      |
|                 | 240             | 1.09                  |                |                      |
|                 | 277             | 0.94                  |                |                      |
|                 | 347             | 0.75                  |                |                      |
|                 | 480             | 0.54                  |                |                      |

# SLING Micro Strike

AREA/SITE/ROAD LIGHTER

## PROJECTED LUMEN MAINTENANCE

| Ambient Temperature | OPERATING HOURS |        |                         |        |         |                |
|---------------------|-----------------|--------|-------------------------|--------|---------|----------------|
|                     | 0               | 25,000 | TM-21-11'<br>L96 60,000 | 50,000 | 100,000 | L70<br>(Hours) |
| 25°C / 77°F         | 1.00            | 0.97   | 0.96                    | 0.95   | 0.91    | 408,000        |
| 40°C / 104°F        | 0.99            | 0.96   | 0.95                    | 0.94   | 0.89    | 356,000        |

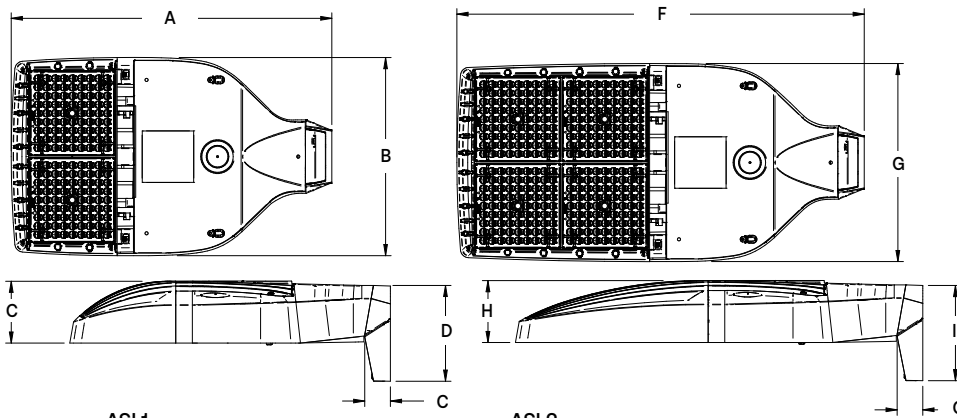
1. Projected per IESNA TM-21-11 (\* Cree XP-L, 2100mA, 105°C Ts, 6,000hrs)

## LUMINAIRE AMBIENT TEMPERATURE FACTOR (LATF)

| Ambient Temperature |        | Lumen Multiplier |
|---------------------|--------|------------------|
| 0° C                | 32° F  | 1.06             |
| 10° C               | 50° F  | 1.03             |
| 20° C               | 68° F  | 1.01             |
| 25° C               | 77° F  | 1.00             |
| 30° C               | 86° F  | 0.99             |
| 40° C               | 104° F | 0.97             |

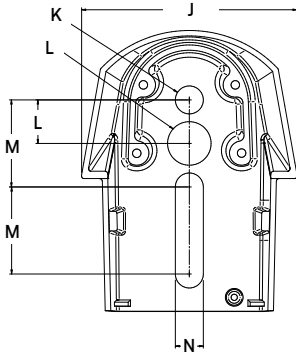
Use these factors to determine relative lumen output for average ambient temperatures from 0-40°C (32-104°F).

## DIMENSIONS



| Weight |                      |
|--------|----------------------|
| ASL1   | 14.47 lbs (6.56 kgs) |
| ASL2   | 17.47 lbs (7.92 kgs) |

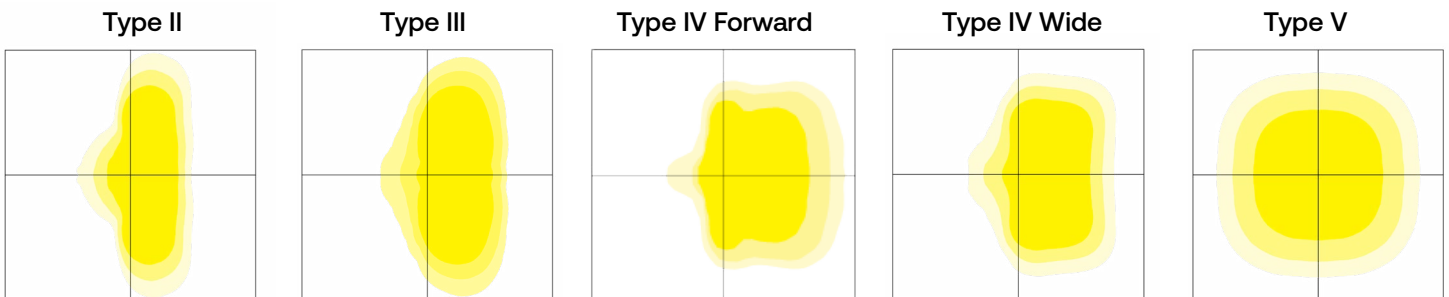
| ASL1  |       | ASL2 |       |      |       |       |      |       |                      |                      |                      |                       |  |
|-------|-------|------|-------|------|-------|-------|------|-------|----------------------|----------------------|----------------------|-----------------------|--|
| A     | B     | C    | D     | E    | F     | G     | H    | I     | ASL1 EPA@0°          | ASL2 EPA@0°          | ASL1 w/ HSS          | ASL2 w/ HSS           |  |
| 18.9" | 11.7" | 3.7" | 5.65" | 1.5" | 24.0" | 11.7" | 3.7" | 5.62" | .46 ft. <sup>2</sup> | .56 ft. <sup>2</sup> | .73 ft. <sup>2</sup> | 1.01 ft. <sup>2</sup> |  |
| 480mm | 297mm | 94mm | 144mm | 38mm | 610mm | 297mm | 94mm | 143mm | .14 m <sup>2</sup>   | .17 m <sup>2</sup>   | .22 m <sup>2</sup>   | .31 m <sup>2</sup>    |  |



| J     | K     | L     | M     | N     |
|-------|-------|-------|-------|-------|
| 4.33" | .562" | .875" | 1.75" | .562" |
| 110mm | 14mm  | 22mm  | 44mm  | 14mm  |

## PHOTOMETRY

The following diagrams represent the general distribution options offered for this product. For detailed information on specific product configurations, see [website photometric test reports](#).





# SLING Micro Strike

AREA/SITE/ROAD LIGHTER

## ADDITIONAL INFORMATION (CONT'D)

### OCCUPANCY SENSOR

- Individual fixture control
- Dims product when space is not occupied



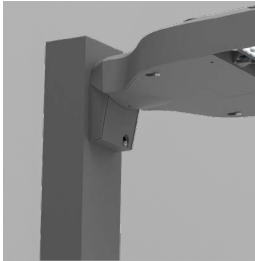
### 7-PIN RECEPTACLE

- Compatible with 3-pin, 5-pin or 7-pin photocontrols
- Turns fixture on when sun sets, off when sun rises
- Wireless networked solution
- For use with a variety of control platforms

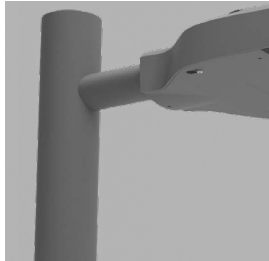
\*Additional accessories required.



### MOUNTING



**Arm Mount** – Fixture ships with integral arm for ease of installation. Compatible with Outdoor S2 drill pattern.



**MAF** – Fits 2-3/8" OD arms Roadway applications.



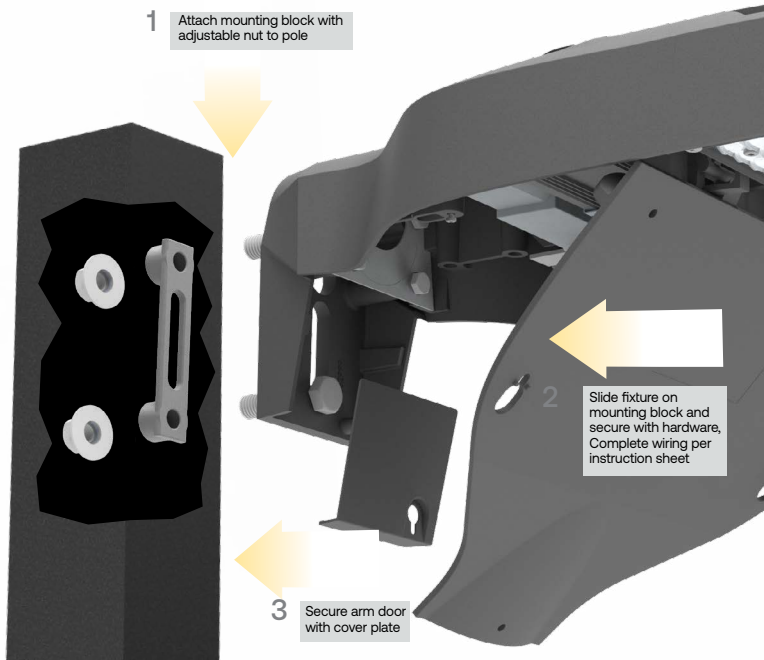
**Wall Mount** – Wall mount bracket designed for building mount applications.

# SLING Micro Strike

AREA/SITE/ROAD LIGHTER

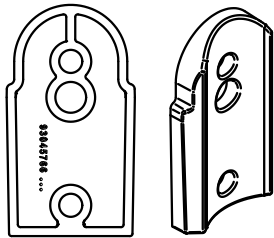
## ADDITIONAL INFORMATION (CONT'D)

### MOUNTING (CONT'D)



**Square Arm Mounting Block** –Arm mount block for ease of installation. Compatible with S2 drill patterns from 2.5" to 4.5"

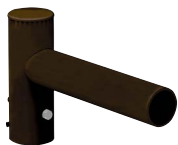
### ACCESSORY



ROUND POLE ADAPTER



WB-AREA-XX



**SPOKE BRACKET** (single arm shown)  
Horizontal round arm tenon adapters for use with MAF mounting type or accessory kit. Reference SH Spoke Pole Top Brackets for ordering information.

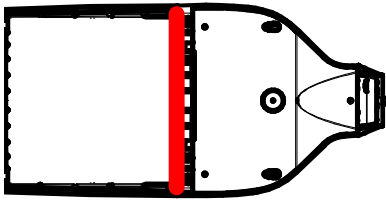
# SLING Micro Strike

AREA/SITE/ROAD LIGHTER

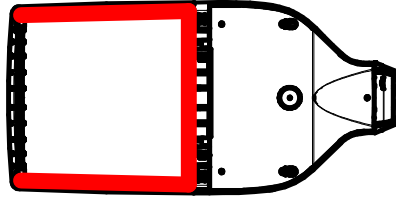
## ADDITIONAL INFORMATION (CONT'D)

### CONFIGURATIONS

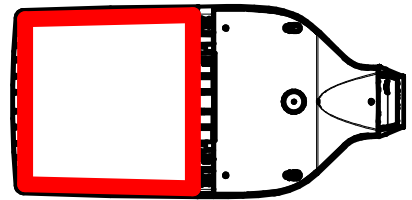
ASLx HSS-90-B-xx



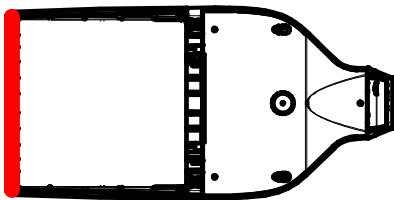
ASLx HSS-270-BSS-xx



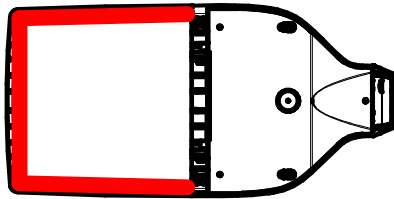
ASLx HSS-360-xx



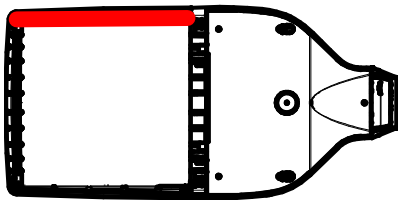
ASLx HSS-90-F-xx



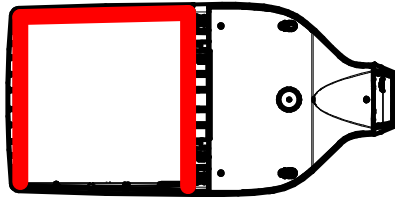
ASLx HSS-270-FSS-xx



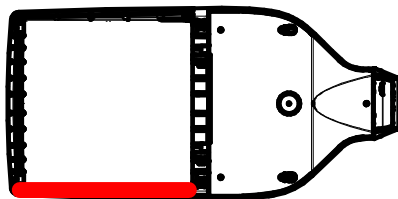
ASLx HSS-90-S-xx



ASLx HSS-270-FSB-xx



ASLx HSS-90-S-xx



ASLx HSS-270-FSB-xx

