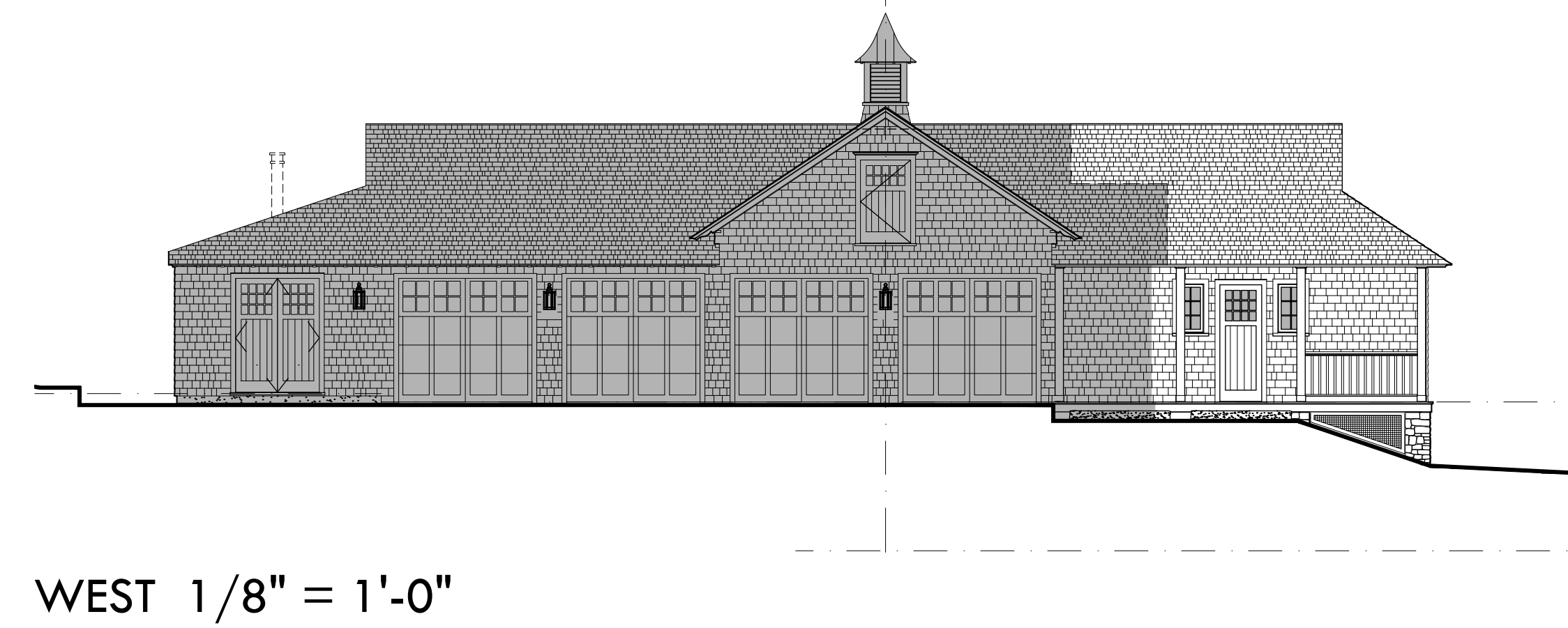
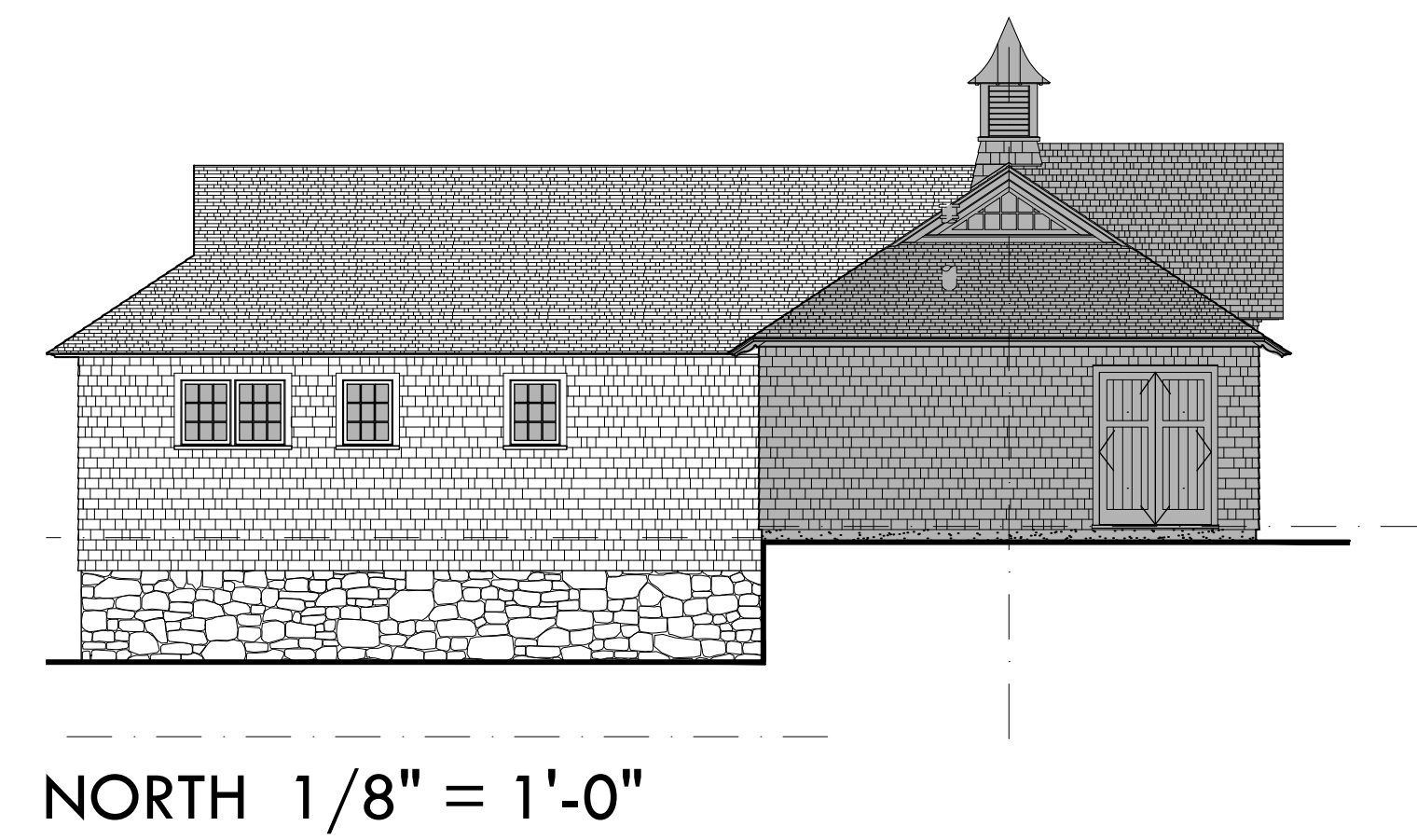
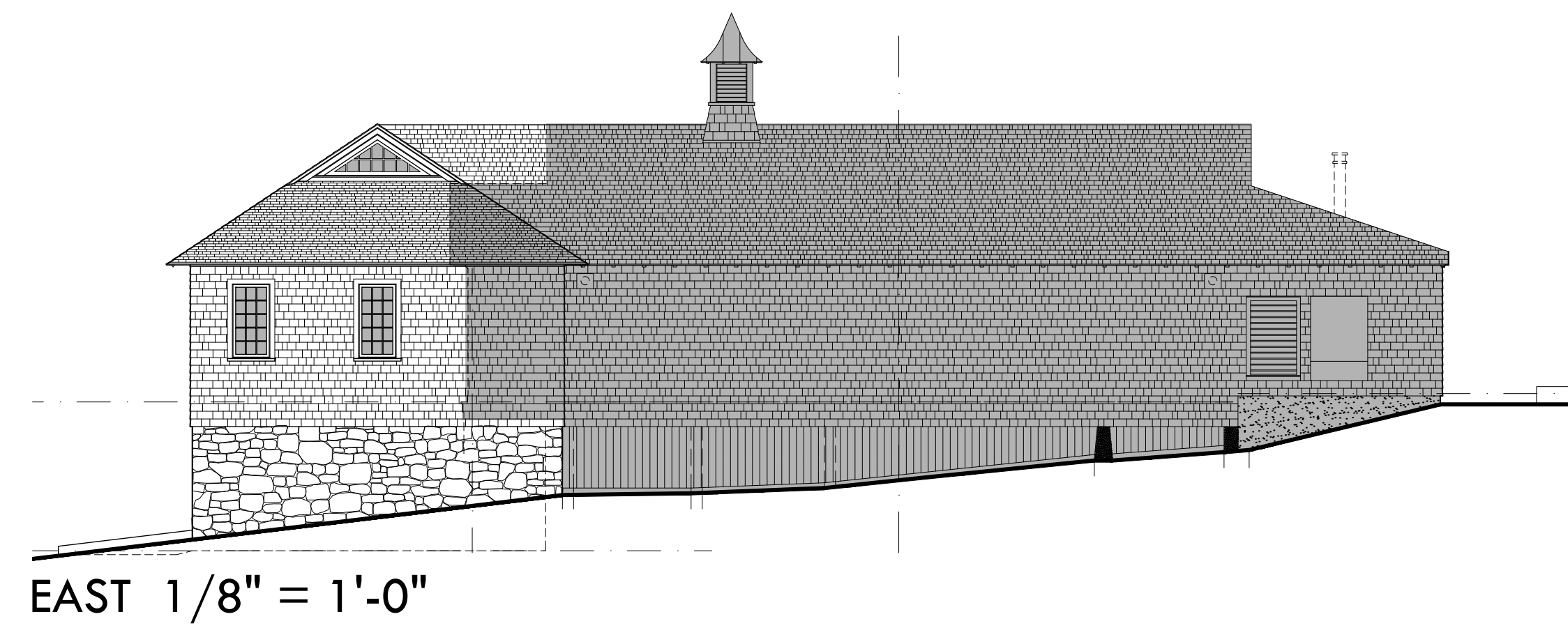
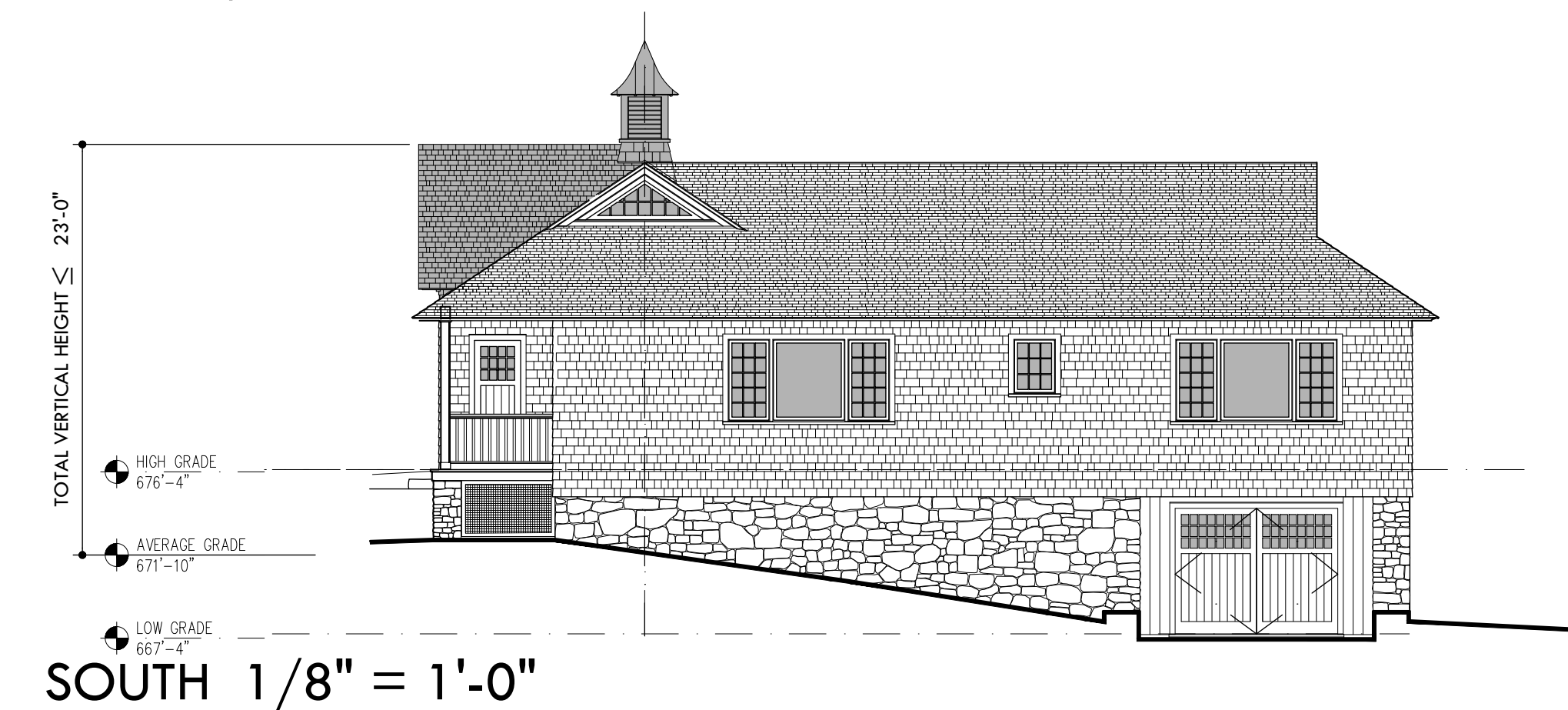
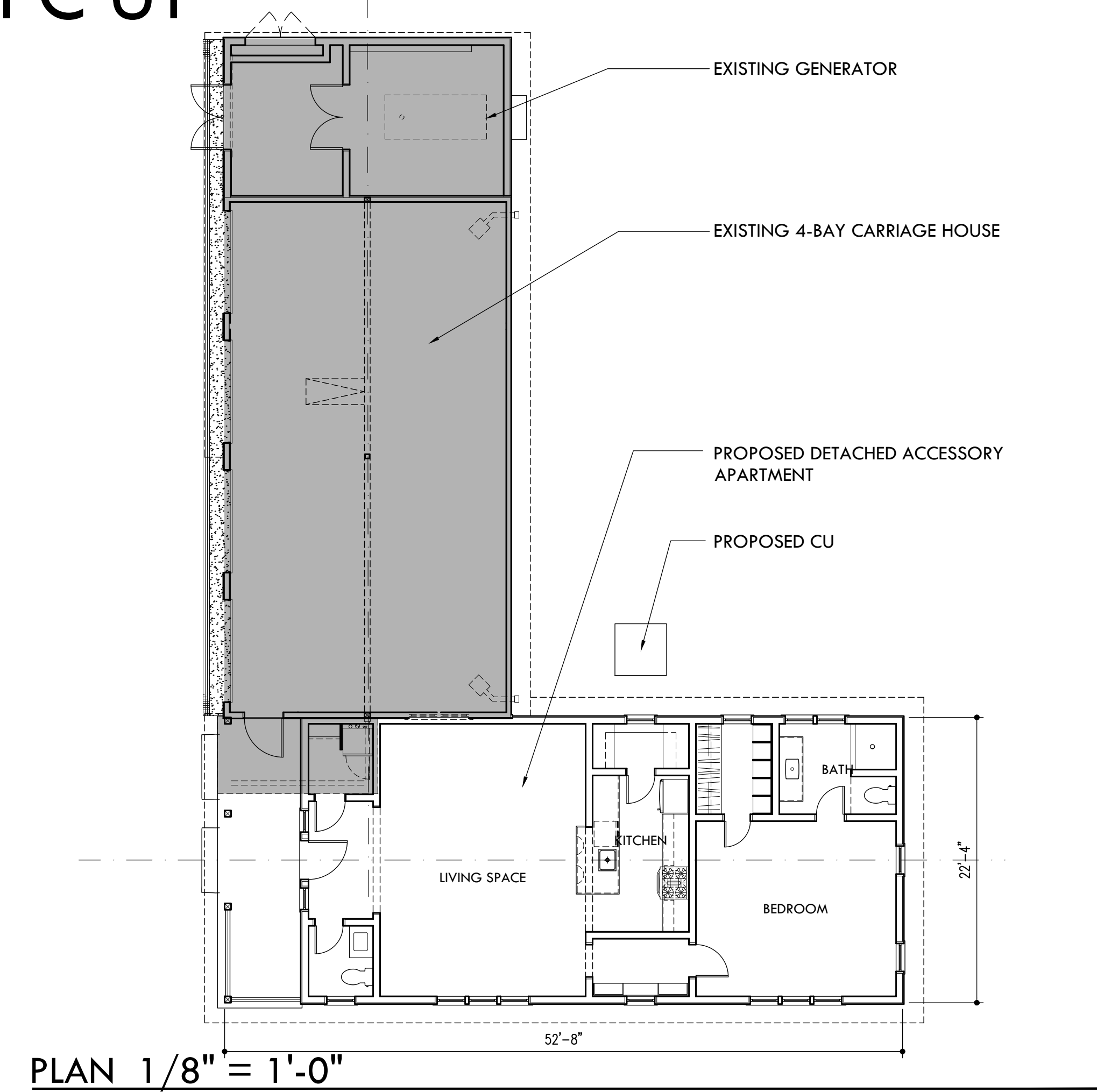
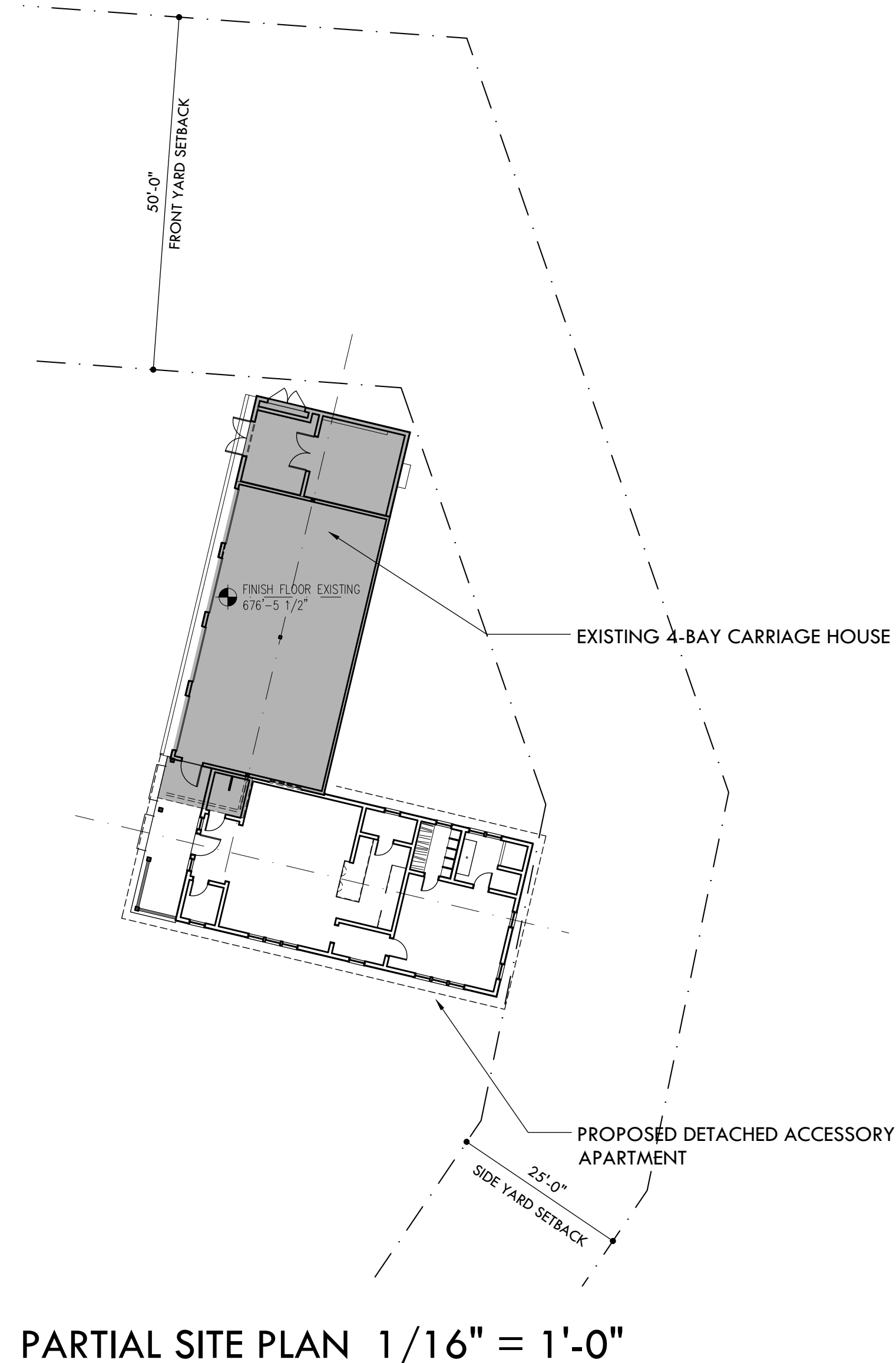
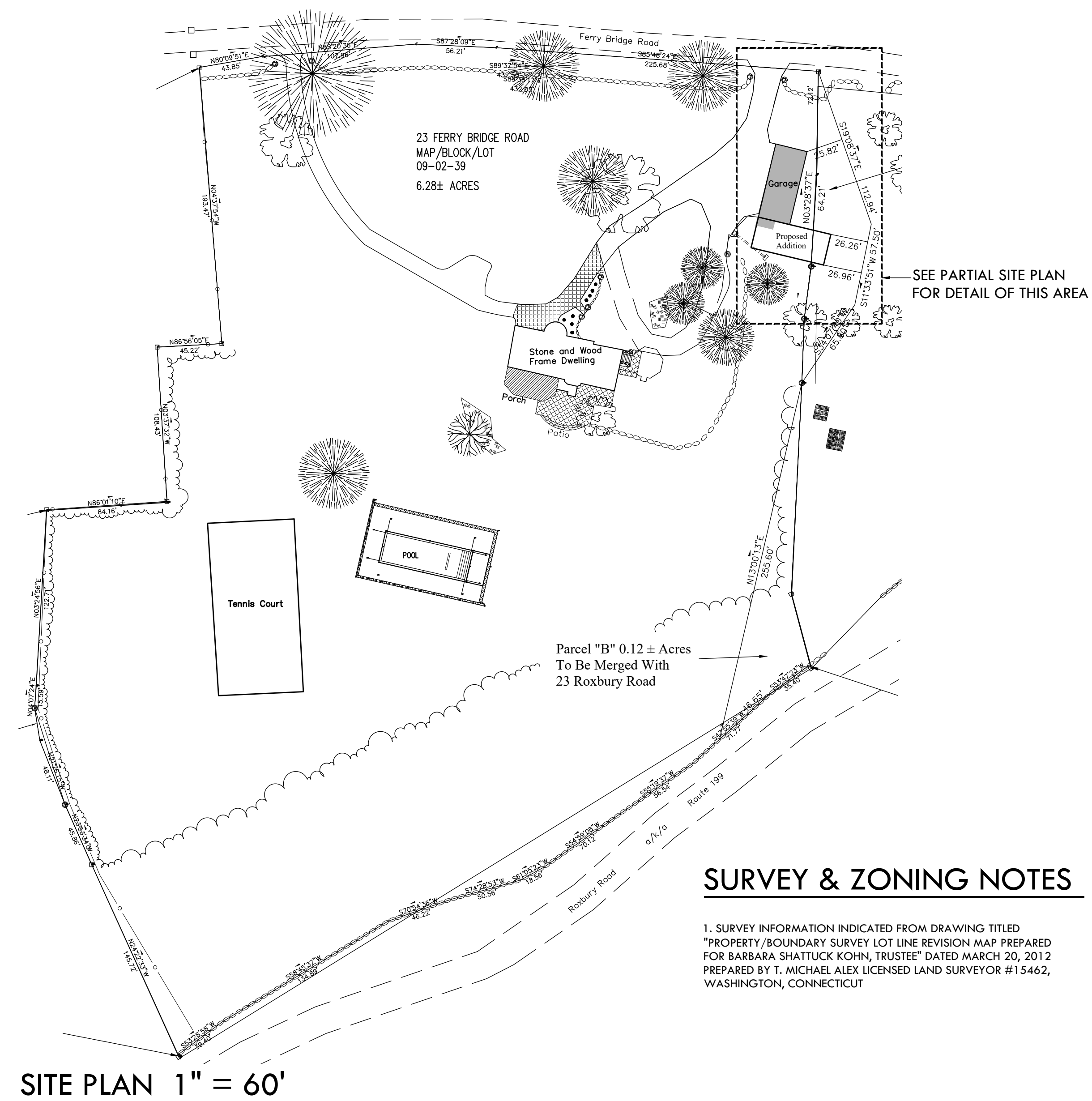


SUMACS GUEST HOUSE WASHINGTON, CONNECTICUT



C:\OWENS\CLIENTS\20501 SUMACS GUEST HOUSE_501 DRAWINGS\501Z001.DWG 10/21/21 8:46 AM 2001 DS

© 2020 HALPER OWENS ARCHITECTS LLC

DRAWINGS AND SPECIFICATIONS INCLUDING ELECTRONIC MEDIA FILES, AS INSTRUMENTS OF PROFESSIONAL SERVICE, ARE AND SHALL REMAIN THE PROPERTY OF THE ARCHITECT. THESE DOCUMENTS ARE NOT TO BE USED, IN WHOLE OR IN PART FOR ANY OTHER PROJECTS OR PURPOSES, OR BY ANY OTHER PARTIES THAN THOSE PROPERLY AUTHORIZED BY CONTRACT, WITHOUT THE SPECIFIC WRITTEN AUTHORIZATION OF HALPER OWENS ARCHITECTS, LLC.

HALPER OWENS ARCHITECTS LLC
18 TRUS ROAD BOX 410 WASHINGTON DEPOT CONNECTICUT 06794
860.868.4000 TEL
860.868.4001 FAX
WWW.HALPEROWENS.COM

SUMACS GUEST HOUSE
WASHINGTON, CONNECTICUT

Revisions	No.	Date	Description

Title
ZONING SHEET

Job
20501

Scale
AS NOTED

Date
10.20.2021

Client File
501Z001

Drawn/Checked
Z001