

CONCLUSION

8

Washington's Vision

Washington residents clearly cherish the character, amenities, and opportunities that define our community. Steep Rock Reservation and Lake Waramaug, the village areas of Washington Green, Washington Depot, Marbledale, and New Preston, and the neighborhoods that make up the Town are evidence of the high quality of life enjoyed by all who live or visit here.

Appreciation for and sensitivity to these values is reflected in the considerable work of the Town's land use commissions and ad hoc committees in recent years. The participation of the public and members of other Town boards and commissions in Planning Commission meetings on the preparation of this Plan further reflect this community-wide respect and appreciation for Washington.

With these contributions, the Planning Commission believes it has identified the sense of the community on the critical issues that must be faced over the next ten years and beyond. This Plan proposes implementation of a set of focused, challenging, and achievable objectives and strategies that will continue the Town's history of preserving and protecting those assets and qualities that make Washington a special place.

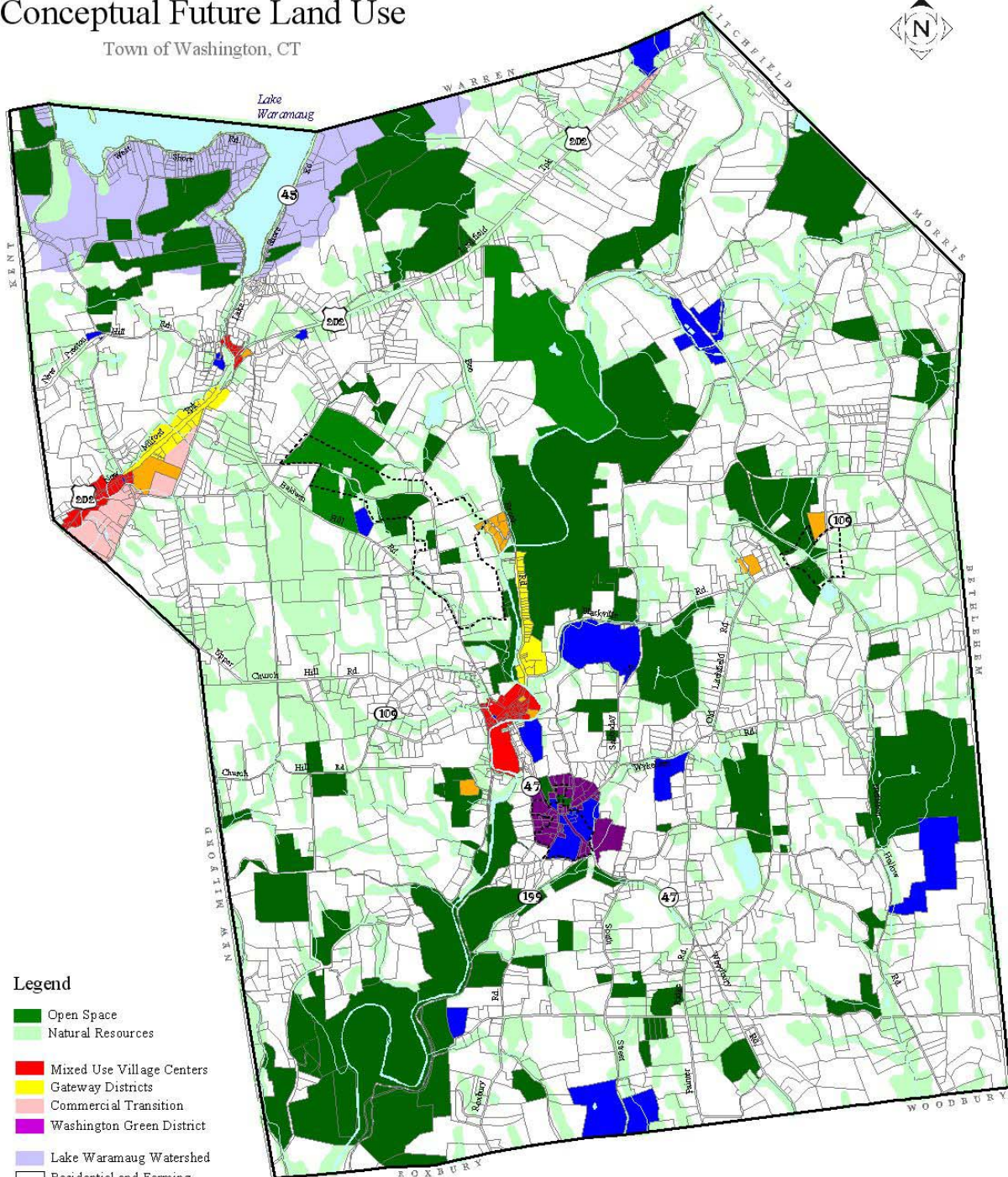
Preserving rural character, enhancing the contributions of our village centers, ensuring available and sensitively developed housing, and addressing community functional needs constitute the vision that guides this Plan. There is little doubt that the most important step of the planning process will be implementation of the recommended strategies. For this, the Plan calls on all Washington residents to ensure that the vision of the community's future is realized.

Conceptual Future Land Use

The map on the facing page is a graphic representation of the structural, zoning, and land use issues, recommendations, and strategies presented in this Plan of Conservation and Development. While this does not, alone, constitute the Town's Plan, nor is it a recommended zoning map, it provides an overview of some of the critical issues that may be illustrated by categories on such a map. It is expected that this map will evolve and develop, as the Community proceeds through the recommended implementation process.

Conceptual Future Land Use

Town of Washington, CT



Legend

- Open Space
- Natural Resources
- Mixed Use Village Centers
- Gateway Districts
- Commercial Transition
- Washington Green District
- Lake Waramaug Watershed
- Residential and Farming
- Multi-Family Housing
- Community Facility/Institutional
- Historic District
- Water and Watercourses

0 5000 Feet



Planimetrics
J. Lutes Drive, Avon, CT 06001 860.677.5287