



COMMUNITY CENTER WASHINGTON, CONNECTICUT

July 8, 2020: Inland Wetlands Commission Pre-application Consultation



SLAM



Today's Presenters:



Kevin Herrick, AIA
The SLAM Collaborative
Architect / Principal



Mike Rettenmeier, PLA, ASLA
The SLAM Collaborative
Landscape Architect / Associate



Tom Daly, PE
Milone & Macbroom
Civil Engineer
Vice President



Process

Conceptual Consulting Services:

1. Assist the Committee in defining the project
 - Building size, site program (parking, outdoor amenities)
2. Identify the challenges and opportunities
 - Flood plain, wetlands, setbacks, buffers, site access, utilities
3. Develop a conceptual site plan
4. Assist the Committee with engaging (early) the regulatory agencies



Multi-Purpose



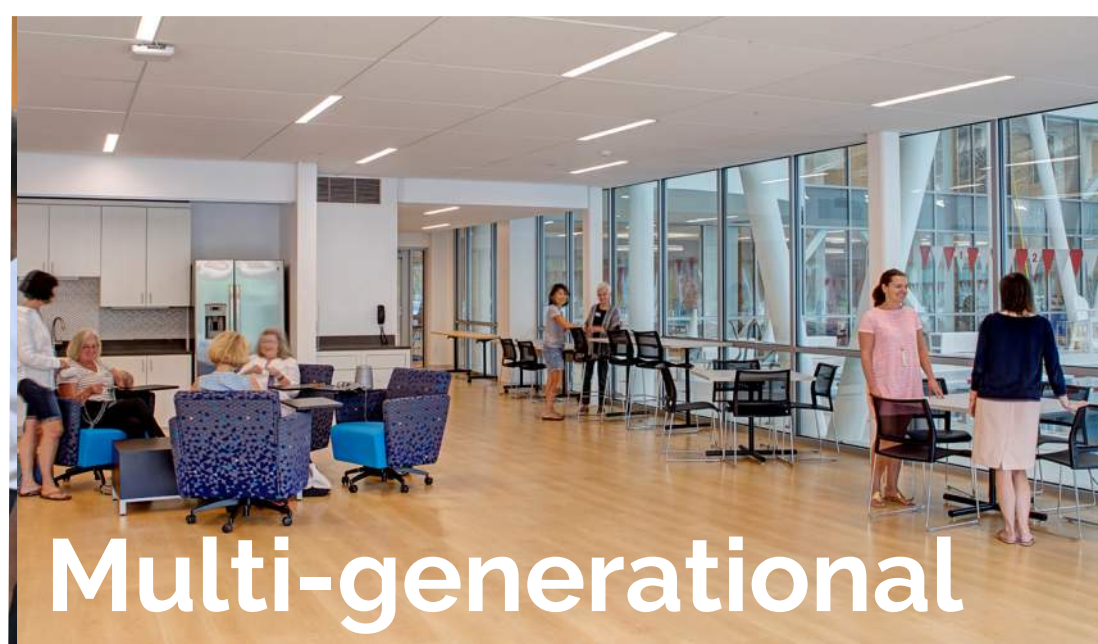
Dining/Meeting



Pickleball



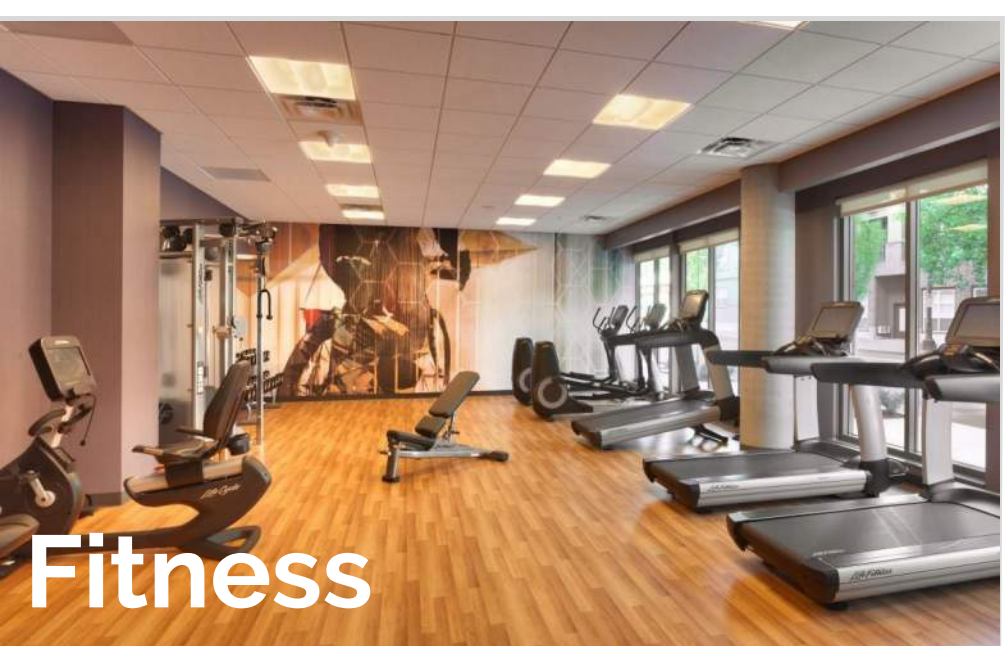
Social



Multi-generational



Arts & Crafts



Fitness



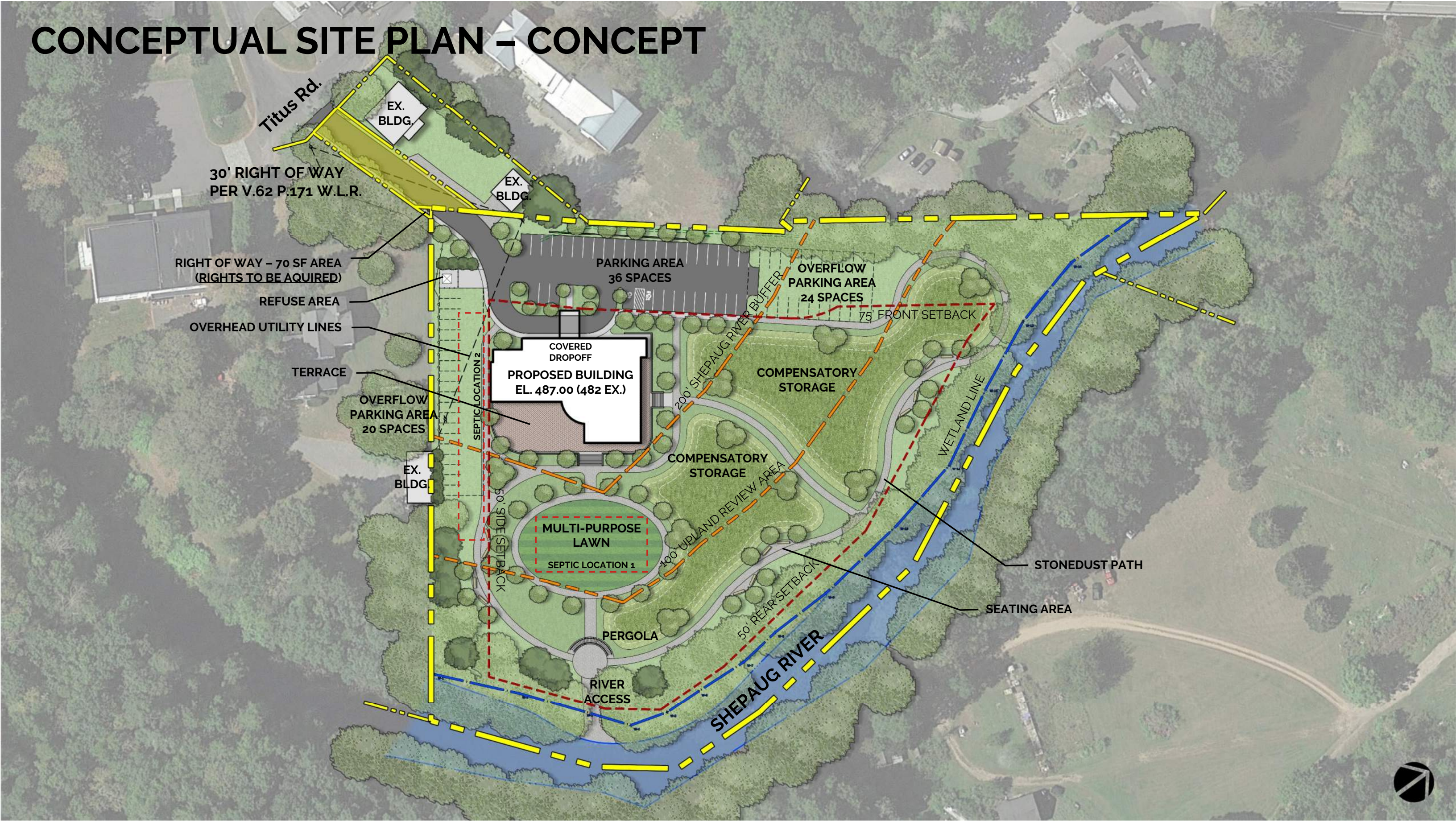
Cooking



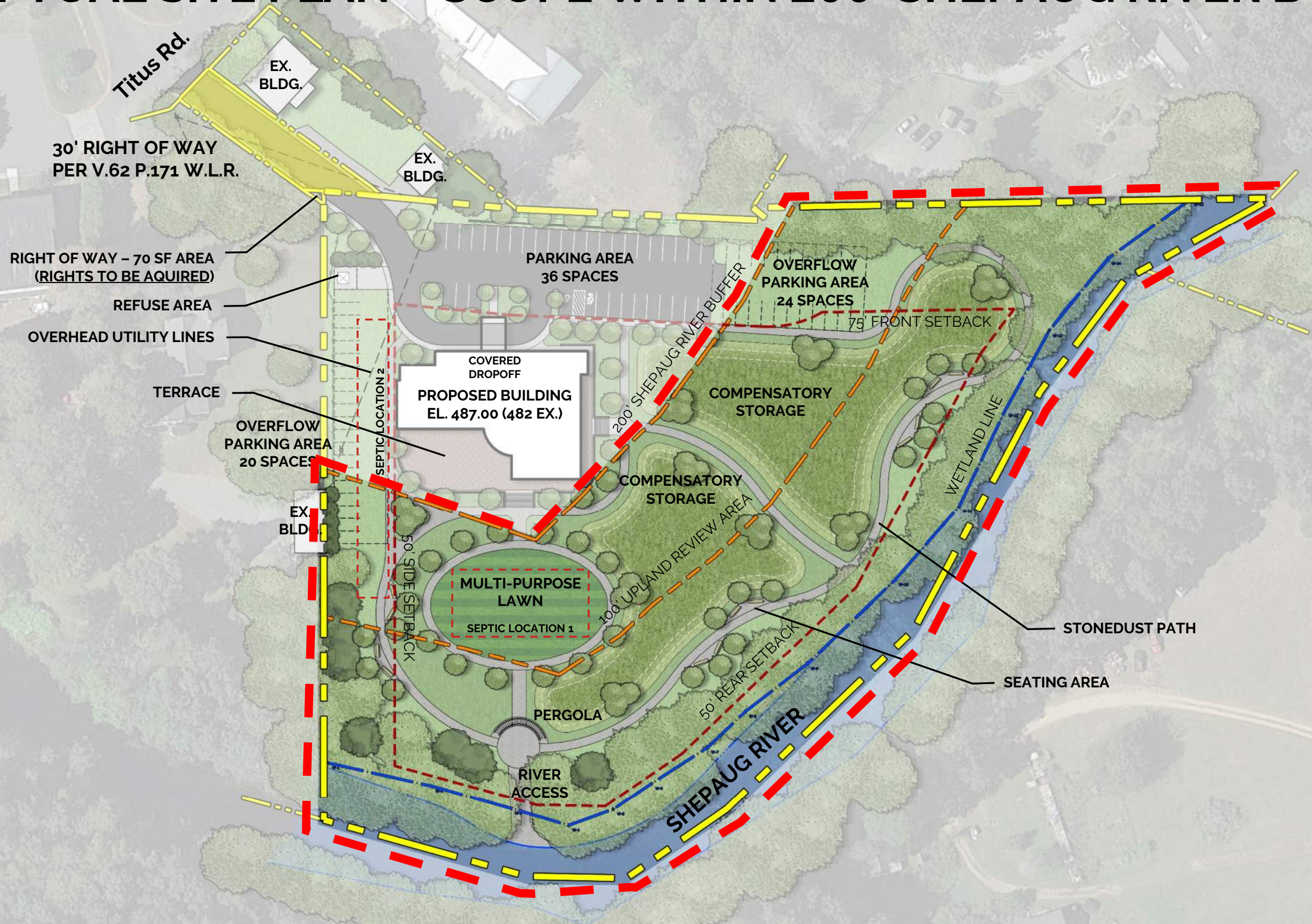
Wellness



CONCEPTUAL SITE PLAN – CONCEPT



CONCEPTUAL SITE PLAN – SCOPE WITHIN 200' SHEPAUG RIVER BUFFER



CHARACTER IMAGES



Building Terrace



Walking Paths



Walking Paths



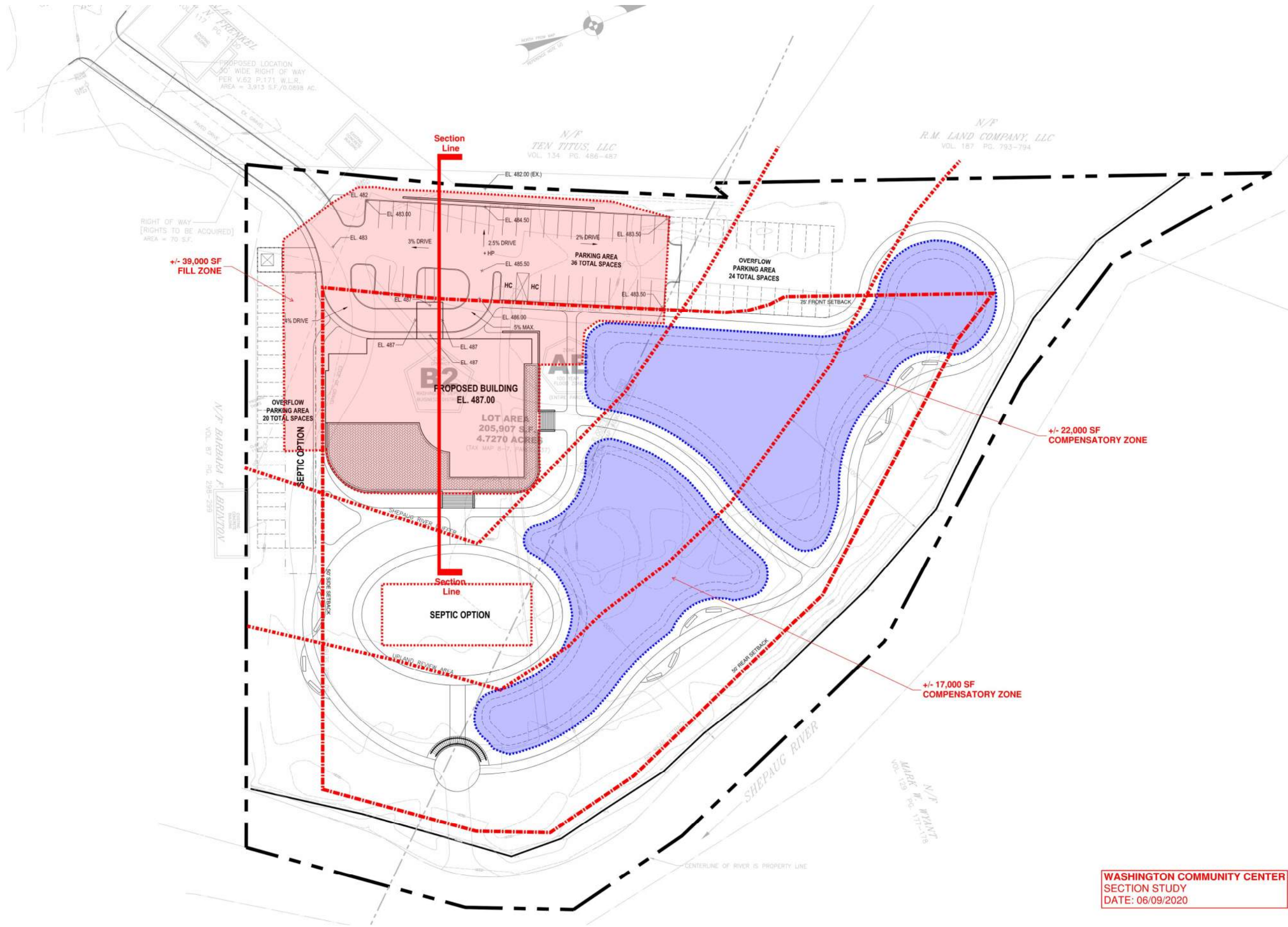
Compensatory
Storage/Meadow



Meadow



Shade
Opportunities



WASHINGTON COMMUNITY CENTER
SECTION STUDY
DATE: 06/09/2020

Q&A?

