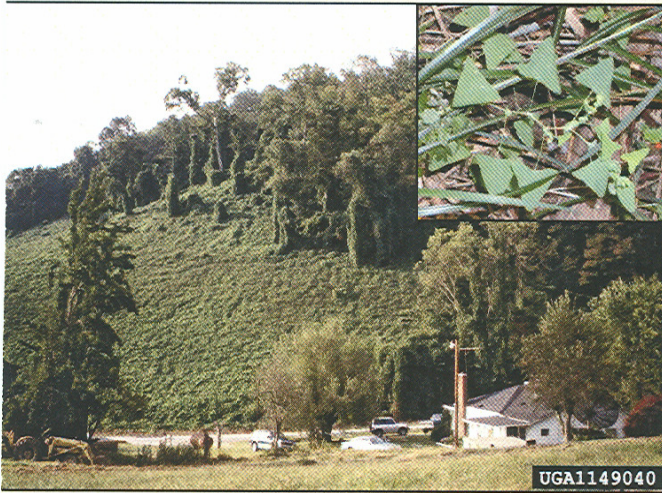


# WANTED

## Mile-a-minute Vine

(*Persicaria perfoliata*, formerly *Polygonum perfoliatum*)



A Mile-a-minute invasion in Pennsylvania. Photos by Randy Westbrook (above) and Donna Ellis (inset)

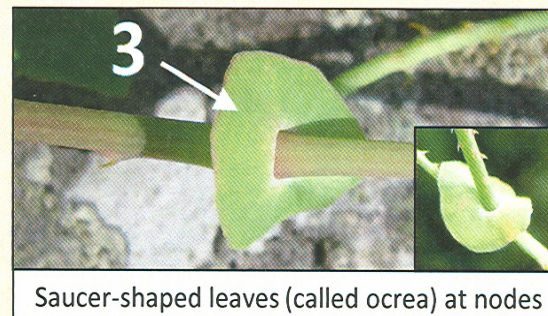
Mile-a-minute Vine is a highly invasive weed spreading north and east across Connecticut, Massachusetts, New York and Rhode Island. It outcompetes and overgrows native species, causing ecological and economic harm. It scrambles over other vegetation and can climb trees and posts (see photo at left). A single vine can grow up to 6 inches per day.

Please help us find, track and control this invasive plant.

## Three identifying traits:



Photo credits: Todd Mervosh (above, left, and inset below) and Les Mehrhoff (below)



**If you observe a plant with all three traits, note its location and report your findings:**

Contact the Connecticut Invasive Plant Working Group (CIPWG) at:

**860-486-6448** (Donna Ellis)

-or-

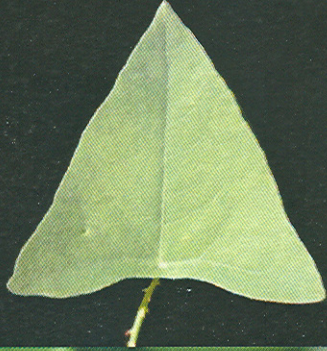
Visit [www.hort.uconn.edu/cipwg/MAM](http://www.hort.uconn.edu/cipwg/MAM) (click "Report MAM")



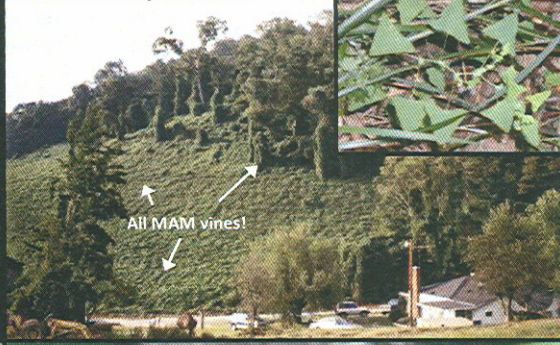
# Mile-a-minute Vine (MAM)

*Persicaria perfoliata*

1. Triangular leaves- no lobes or indentations



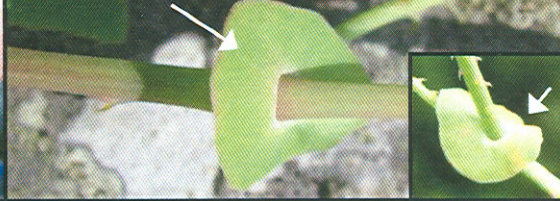
MAM in Pennsylvania, 1994



2. Small barbs along stems



3. Saucer-shaped leaves (called ocrea) at nodes



## LOOK AROUND YOUR YARD...

Do you see this plant?

Leaf shapes of other vines: these species do not harm ecosystems and should **NOT** be reported:



Mile-a-minute Vine (Scientific name: *Persicaria perfoliata*) is a highly invasive weed spreading across Connecticut. It outcompetes and overgrows native species, causing ecological and economic harm. The vine scrambles over other vegetation and can climb trees and posts (see front). Mile-a-minute is deserving of its common name and its reputation as "the Kudzu of the North" - a single vine can grow up to **6 inches per day**. Mile-a-minute has been banned by the CT Legislature (Sec. 22a-381d of the CT General Statutes makes it illegal to transport, cultivate, sell or distribute the species), but the species is still spreading in natural areas and perhaps in your own backyard!

Please help us to find, track and control this plant in Connecticut. With your help, we can organize and coordinate the removal of Mile-a-minute Vine before it becomes an even bigger and more costly problem. If you see a vine with all three of the characteristics on the front of this card: (1) triangular leaves, (2) small barbs on the stem, and (3) ocrea (described on front), note its location and report your findings using the contact information below.

Contact the Connecticut Invasive Plant Working Group (CIPWG) at **860-486-6448** (Donna Ellis)

-or-

Visit [www.hort.uconn.edu/cipwg/MAM](http://www.hort.uconn.edu/cipwg/MAM) (click "Report MAM")

For more information, please contact CIPWG or visit [www.hort.uconn.edu/cipwg](http://www.hort.uconn.edu/cipwg)

Photo credits: Todd Mervosh, Les Mehrhoff, Donna Ellis and Randy Westbrooks