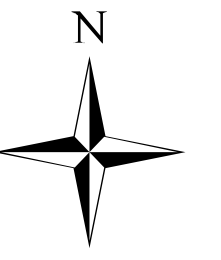
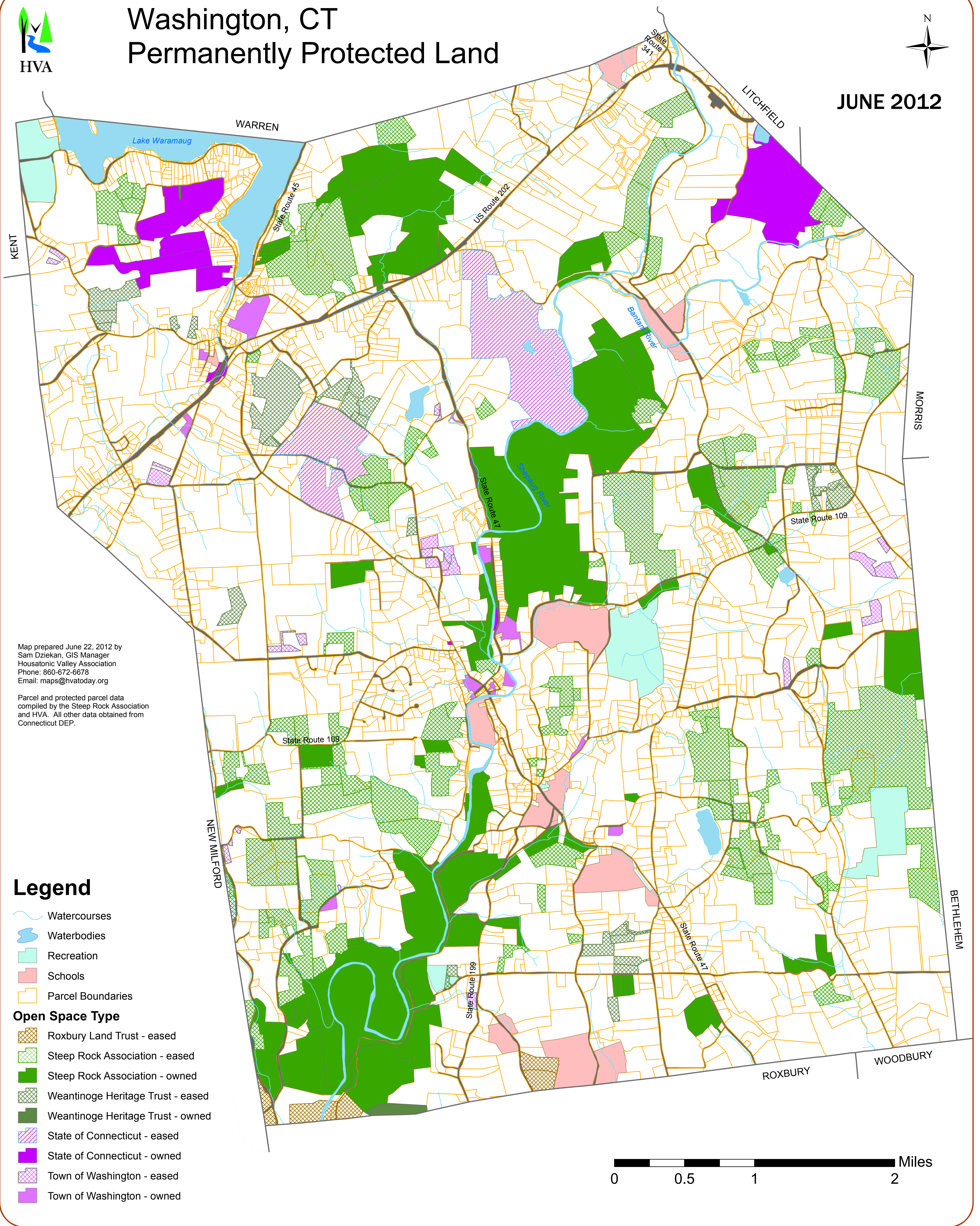




Washington, CT Permanently Protected Land



JUNE 2012



Map prepared June 22, 2012 by
Sam Dziekan, GIS Manager
Housatonic Valley Association
Phone: 860-672-6678
Email: maps@hvatoday.org

Parcel and protected parcel data
compiled by the Steep Rock Association
and HVA. All other data obtained from
Connecticut DEP.

Legend

- Watercourses
- Waterbodies
- Recreation
- Schools
- Parcel Boundaries

Open Space Type

- Roxbury Land Trust - eased
- Steep Rock Association - eased
- Steep Rock Association - owned
- Weantinoge Heritage Trust - eased
- Weantinoge Heritage Trust - owned
- State of Connecticut - eased
- State of Connecticut - owned
- Town of Washington - eased
- Town of Washington - owned

0 0.5 1 2 Miles